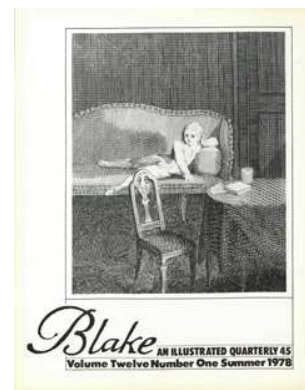
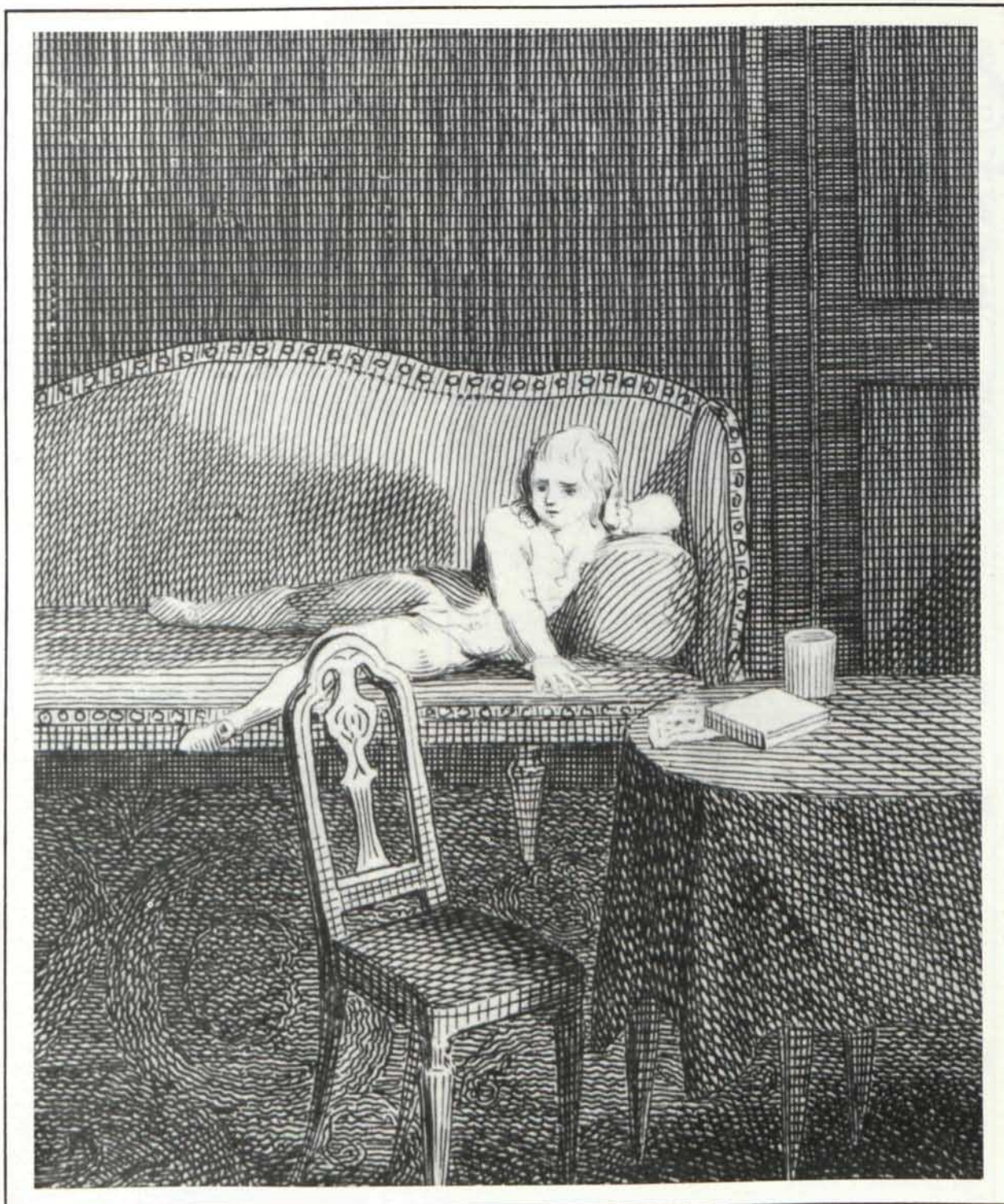


AN ILLUSTRATED QUARTERLY
BLAKE

C O N T E N T S

Blake/An Illustrated Quarterly, Volume 12, Issue 1, Summer 1978, pp. 1-3





Blake AN ILLUSTRATED QUARTERLY 45
Volume Twelve Number One Summer 1978

Blake

AN ILLUSTRATED QUARTERLY 45
Volume Twelve Number One
Summer 1978

CONTENTS

William Rosetti's Aldine Edition of Blake
by R. W. Peattie, 4
The Figure in the Carpet
by Robert N. Essick, 10
Blake & the Seaman's Recorder
by Christopher Heppner, 15
The Job Ballet
by Mary Clarke, 18
Blake in the Marketplace 1976-77
by Robert N. Essick, 26

POETRY

by Joe Napora, 39, Morton D. Paley, 39, Gunnar
Harding, 39, and Frank Graziano, 40

REVIEWS

Blake Exhibition at the Tate Gallery
reviewed by Ruth E. Fine, 42
John Howard's *Blake's "Milton" and Milton
Reconsidered* edited by Karl Franson
reviewed by Martin K. Nurmi, 56
Recent work on Mary Wollstonecraft
reviewed by Marcia Tillotson, 58
David Bindman's *Blake as an Artist*
reviewed by Jean H. Hagstrum, 64

MINUTE PARTICULARS

"Blake, William" in the *New American Encyclopedia*
by Raymond H. Deck, Jr., 68
Another Early Printing of Blake's "Night"
by Raymond H. Deck, Jr., 69
The First Printed Reference to the Publication
of *Job: Disraeli(?) in The Star Chamber* (1826)
by G. E. Bentley, Jr., 69
The Selling of Blake's *Night Thoughts* Drawings in
the 1870s
by G. E. Bentley, Jr., 70

NEWSLETTER

© 1978 by Morris Eaves & Morton D. Paley

G. E. BENTLEY, JR. (University of Toronto) is concerned primarily with Blake, Flaxman, Cumberland, and illustrated books of the 1790s.

MARY CLARKE is editor of Britain's leading dance magazine, *Dancing Times* (3 Hand Court, Holborn). Among her books are *Making a Ballet* and *Understanding a Ballet*, both written in collaboration with Clement Crisp.

RAYMOND H. DECK, JR.'s articles on Blake have appeared in recent issues of *Blake* and *Studies in Romanticism*. He recently received his Ph.D. from Brandeis University and will be looking for a job.

ROBERT N. ESSICK is co-editor, with Donald Pearce, of *Blake in His Time*, a collection of essays on Blake's art forthcoming from Indiana Univ. Press.

RUTH E. FINE is National Gallery of Art Curator for Alverthorpe Gallery (Jenkintown, Pa.), which houses the Lessing J. Rosenwald Collection. She compiled the checklist of Blake material in that collection (*Blake Newsletter* 35).

FRANK GRAZIANO is working toward an MFA at the Writer's Workshop, University of Iowa. He is the author of four chapbooks of poetry. "The Last Judgement" is from his manuscript *The First Book of Og, King of Bashan*, written after Blake's illustrations for Blair's *The Grave*.

JEAN H. HAGSTRUM (Northwestern University) is completing a book tentatively entitled *Eros and Sensibility: Sexual and Ideal Love from Milton to Mozart*. His *Blake Poet & Painter* will be re-issued in the fall of 1978 by the University of Chicago Press as a Phoenix paperback.

GUNNAR HARDING is a Swedish poet.

CHRISTOPHER HEPPNER is an Assistant Professor of English at McGill, and has published essays on Blake in *Blake* and *Colby Library Quarterly*.

JOE NAPORA is a poet and filmmaker, with recent poems scheduled for publication in *Kuksu* and *etc.*

MARTIN K. NURMI's most recent book is *William Blake* (1975), an introduction to the poetry.

MORTON D. PALEY is Co-Editor of *Blake*. His most recent book is a study of Blake's art (1978).

R. W. PEATTIE (Univ. of Calgary) has published articles on the Rossettis and on Swinburne and is preparing a biography of W. M. Rossetti.

MARCIA TILLOTSON (University of New Mexico) is editing the Byron apocrypha, a checklist of which is forthcoming shortly.

GUNNEL TOTTIE teaches English at Stockholm University.

CONTRIBUTORS

EDITORS

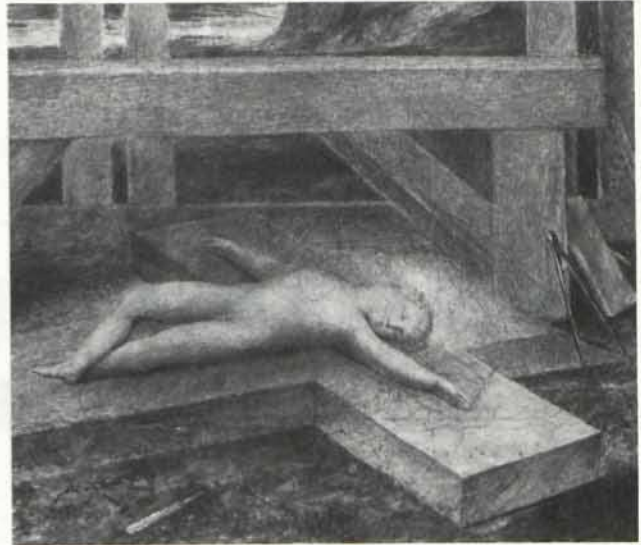
EDITORS: Morris Eaves, Univ. of New Mexico, and Morton D. Paley, Univ. of California, Berkeley.

BIBLIOGRAPHER: Thomas Minnick, Ohio State University.

ASSOCIATE EDITOR FOR GREAT BRITAIN: Frances A. Carey, Assistant Curator, Department of Prints and Drawings, British Museum.

PRODUCTION OFFICE: Morris Eaves, Department of English, University of New Mexico, Albuquerque, NM 87131, TELEPHONE 505/277-3103.
Morton D. Paley, Department of English, University of California, Berkeley, CA 94720.
Thomas L. Minnick, University College, Ohio State University, 1050 Carmack Road, Columbus, Ohio, 43210.

Frances A. Carey, Department of Prints and Drawings, British Museum, Great Russell Street, London WC1B 3DG, England.



EDITORIAL ASSISTANT IN CHARGE: Lynn Goldstein, Univ. of New Mexico.

EDITORIAL ASSISTANTS: David Anderson, Shelley Grieve, Kris Lackey, & Cynthia Lewiecki, all Univ. of New Mexico.

BLAKE/AN ILLUSTRATED QUARTERLY is published under the sponsorship of the Department of English, University of New Mexico.

SUBSCRIPTIONS are \$12 for 1 year, 1 volume, 4 issues. Special rate for individuals, \$10, surface mail. \$15 for subscribers overseas who prefer air mail. U.S. currency or international money order if possible. Make checks payable to Blake/An Illustrated Quarterly. Address all subscription orders & related communications to the Circulation Mgr., LuAnn Baca, *Blake*, Dept. of English, Univ. of New Mexico, Albuquerque NM 87131 USA.

Some BACK ISSUES are available. Address LuAnn Baca for a list of issues and prices.

MANUSCRIPTS are welcome. Send two copies, typed and documented according to the forms suggested in the MLA Style Sheet, 2nd. ed., to either of the editors: Morris Eaves, Dept. of English, Univ. of New Mexico, Albuquerque, NM 87131; Morton D. Paley, Dept. of English, Univ. of California, Berkeley, CA 94720.

INTERNATIONAL SERIAL NUMBER is 0006-453X. *Blake/An Illustrated Quarterly*, is INDEXED in the Modern Language Association's International Bibliography, the Modern Humanities Research Association's Annual Bibliography of English Language and Literature, *English Language Notes'* annual Romantic bibliography, ARTbibliographies MODERN, and the American Humanities Index (Whitston Pub.).

INFORMATION

