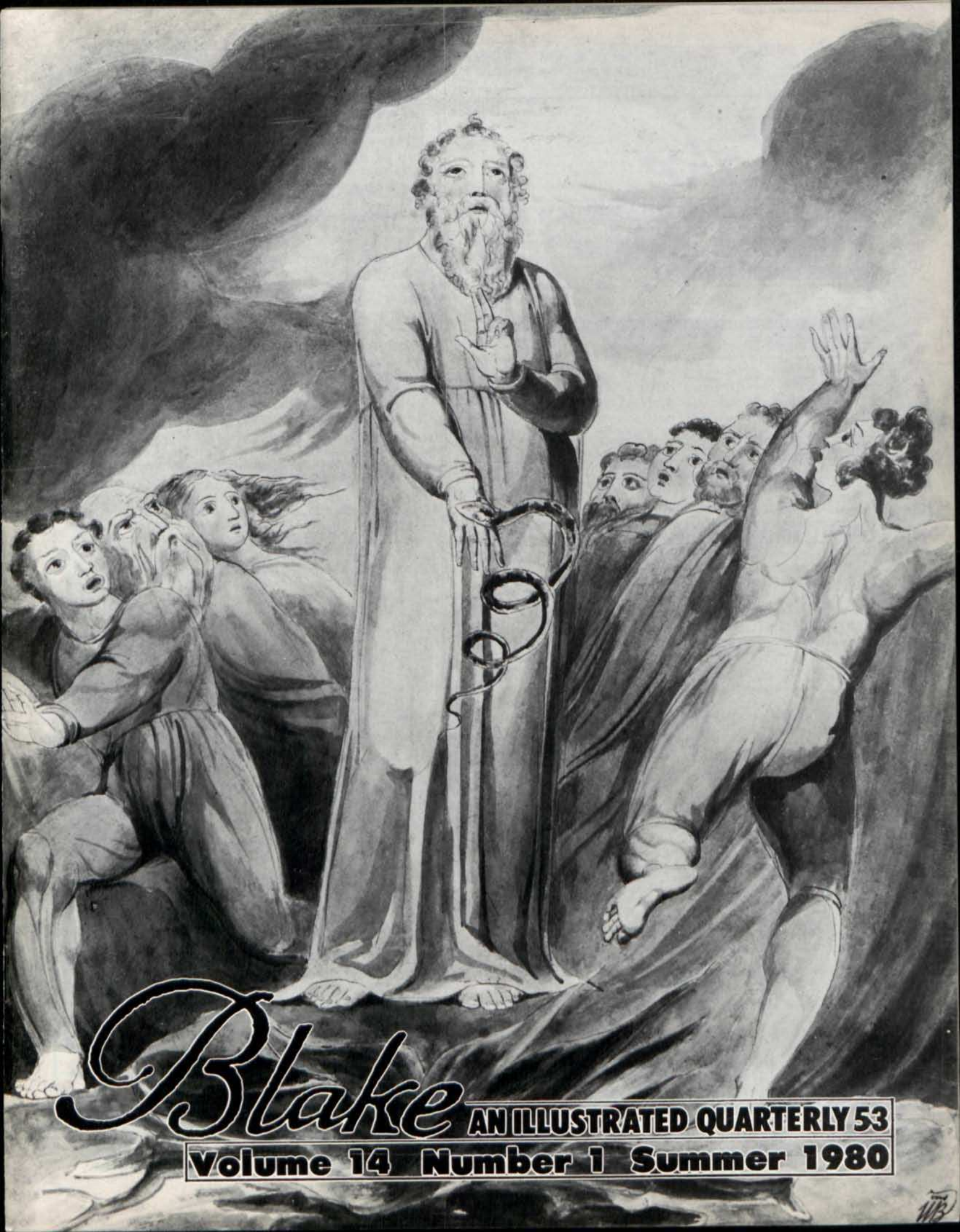


AN ILLUSTRATED QUARTERLY
BLAKE

C O N T E N T S

Blake/An Illustrated Quarterly, Volume 14, Issue 1, Summer 1980, pp. 1-3





Blake AN ILLUSTRATED QUARTERLY 53

Volume 14 Number 1 Summer 1980

WB

Blake

AN ILLUSTRATED QUARTERLY 53
Volume 14 Number 1
Summer 1980

CONTENTS

Blake in the Marketplace, 1978-1979
by Robert N. Essick with the assistance of
Thomas V. Lange, 4

REVIEWS

David Bindman, ed., *John Flaxman*
reviewed by Judy Egerton, 22

MINUTE PARTICULARS

"Poisonous Blues," and Other Pigments
by Ruthven Todd, 31

Young's *Night Thoughts* (London: R. E. Edwards,
1979), A New Unillustrated State
by G. E. Bentley, Jr., 34

John Dennis and Blake's Guinea Sun
by Edward Strickland, 36

The Antitype to Blake's "Laughing Song"
by Thomas Dilworth, 36

Blake's Trial Documents
by G. E. Bentley, Jr., 37

© 1980 by Morris Eaves & Morton D. Paley

1 "Feed the Hungry," for the *Acts of Mercy*, pen
and wash, 27.3 x 25.4 cm. University College,
London.

2 "Hercules in the Garden of the Hesperides,"
vase, blue jasper, white relief, height 31 cm.
City Museum and Art Gallery, Stoke-on-Trent.

3 *Superflax: Zorrriiiiiiiii* (Idee: Homer;
Zeichnungen: John Flaxman; *Buch und Regie*:
Achim Lipp; paperback, 25 pp).

G. E. BENTLEY, JR. of the University of Toronto
has edited *William Blake's Writings*, 2 vols. (1978
[1979]) and is currently working on illustrated
books of Blake's time.

THOMAS DILWORTH teaches English and Comparative
Literature at the University of Windsor and is
the author of *The Liturgical Parenthesis of*
David Jones.

JUDY EGERTON works under Martin Butlin as Assistant
Keeper in the British Collection of the Tate
Gallery, London. She has published *English*
Watercolour Painting (Phaidon) and Catalogues of
British Sporting and Animal Paintings and Drawings
in the Mellon Collection.

ROBERT N. ESSICK, Professor of English at the
University of California, Riverside, is the
author of *William Blake, Printmaker* (Princeton,
1980) and *A Catalogue of William Blake's Separate*
Plates (forthcoming Princeton, 1982).

THOMAS V. LANGE is Assistant Curator of Printed
Books at The Pierpont Morgan Library, New York,
and is a specialist in illustrated books.

EDWARD STRICKLAND is an Assistant Professor at
Universidad Interamericana de Puerto Rico and has
taught in the states, Canada and Iran. He had
published on romanticism in *ELH*, *RLC* and is a
baroque music critic for *Fanfare* magazine.

RUTHVEN TODD, one of the great Blake scholars of
our time, died in Mallorca in 1978.



CONTRIBUTORS

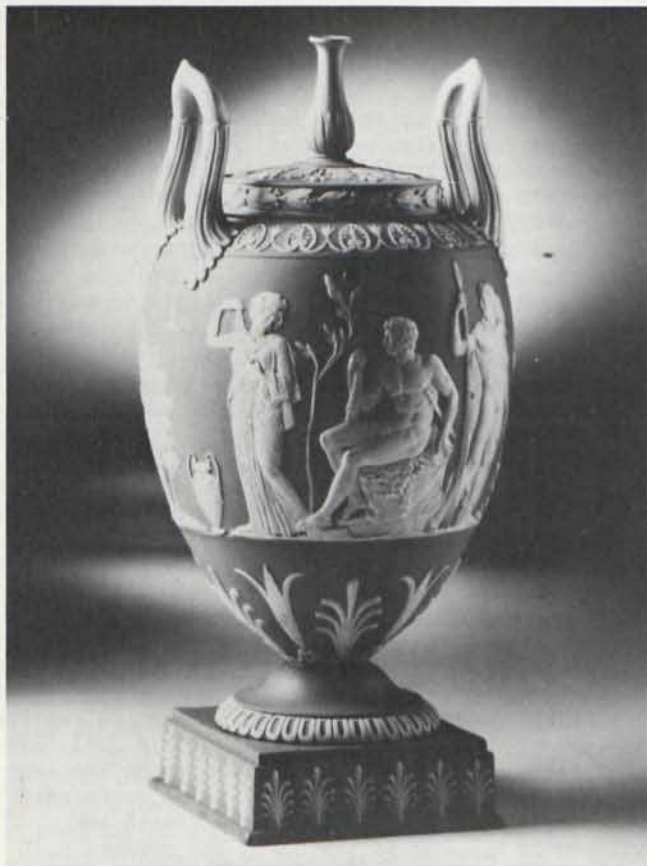
EDITORS

EDITORS: Morris Eaves, Univ. of New Mexico, and Morton D. Paley, Univ. of California, Berkeley.

BIBLIOGRAPHER: Thomas Minnick, Ohio State University.

ASSOCIATE EDITOR FOR GREAT BRITAIN: Frances A. Carey, Assistant Curator, Department of Prints and Drawings, British Museum.

PRODUCTION OFFICE: Morris Eaves, Department of English, University of New Mexico, Albuquerque, NM 87131, TELEPHONE 505/277-3103.
Morton D. Paley, Department of English, University of California, Berkeley, CA 94720.
Thomas L. Minnick, University College, Ohio State University, 1050 Carmack Road, Columbus, Ohio, 43210.
Frances A. Carey, Department of Prints and Drawings, British Museum, Great Russell Street, London WC1B 3DG, England.



SUPERFLAX ZORRRRRRRRN



EDITORIAL ASSISTANT IN CHARGE: Susan Corban, Univ. of New Mexico. EDITORIAL ASSISTANTS: Wendy Jones, Wayne Erickson, Kris Lackey, Joe Zimmerman.

BLAKE/AN ILLUSTRATED QUARTERLY is published under the sponsorship of the Department of English, University of New Mexico.

SUBSCRIPTIONS are \$12.00 for 1 year, 1 volume, 4 issues. Special rate for individuals, \$10.00, surface mail. \$17.00 for subscribers overseas who prefer air mail. U. S. currency or international money order if possible. Make checks payable to Blake/An Illustrated Quarterly. Address all subscription orders & related communications to the Circulation Mgr., Susan Corban, *Blake*, Dept. of English, Univ. of New Mexico, Albuquerque N. M. 87131.

Some BACK ISSUES are available. Address Susan Corban for a list of issues and prices.

MANUSCRIPTS are welcome. Send two copies, typed and documented according to the forms suggested in the MLA Style Sheet, 2nd. ed., to either of the editors: Morris Eaves, Dept. of English, Univ. of New Mexico, Albuquerque N. M. 87131; Morton D. Paley, Dept. of English, Univ. of California, Berkeley California 94720

INTERNATIONAL SERIAL NUMBER is 0006-453X. *Blake/An Illustrated Quarterly*, is INDEXED in the Modern Language Association's International Bibliography, the Modern Humanities Research Association's Annual Bibliography of English Language and Literature, *English Language Notes'* annual Romantic bibliography, ARTbibliographies MODERN, and the American Humanities Index (Whitson Pub.).

INFORMATION