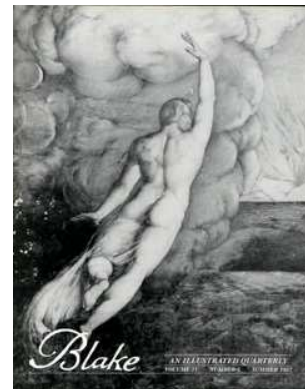
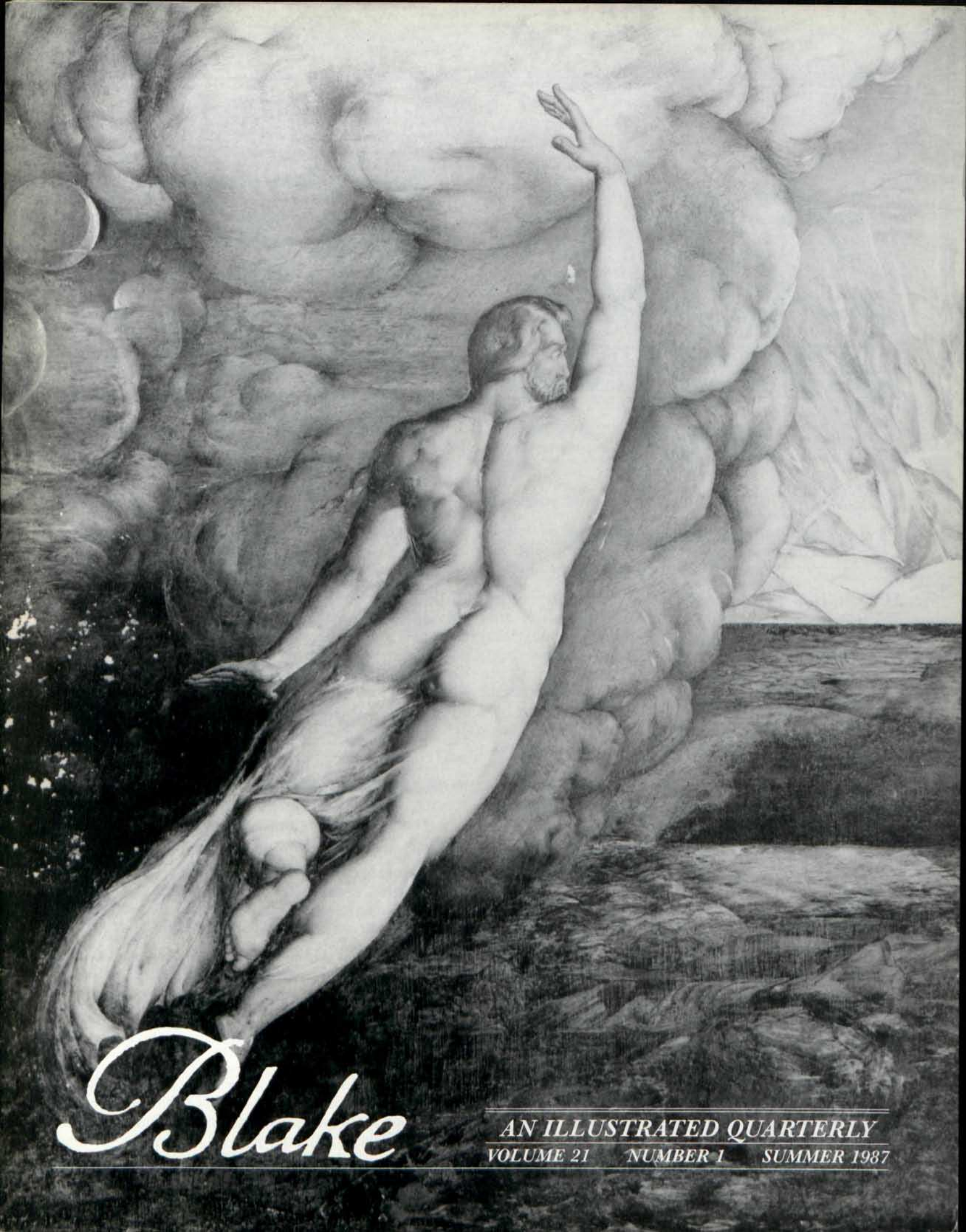


AN ILLUSTRATED QUARTERLY  
**BLAKE**

C O N T E N T S

Blake/An Illustrated Quarterly, Volume 21, Issue 1, Summer 1987, pp. 1-3





# Blake

---

AN ILLUSTRATED QUARTERLY  
VOLUME 21 NUMBER 1 SUMMER 1987

---

---



---

# Blake

---



---

AN ILLUSTRATED QUARTERLY

VOLUME 21 NUMBER 1 SUMMER 1987

---

## CONTENTS

---

- 4 Blake in the Marketplace, 1986  
by Robert N. Essick

---

## DISCUSSION

---

- 14 Reply to Mary V. Jackson  
by Charu Sheel Singh
- 16 Reply to Charu Sheel Singh  
by Mary V. Jackson
- 16 More on *The Romantic Body*  
by Jean H. Hagstrum

---

## REVIEWS

---

- 17 Jean H. Hagstrum. *The Romantic Body: Love and Sexuality in Keats, Wordsworth, and Blake*, reviewed by Anne K. Mellor
- 19 Kenneth Gross. *Spenserian Poetics: Idolatry, Iconoclasm, & Magic*, reviewed by Robert F. Gleckner
- 21 Joanne Witke. *William Blake's Epic: Imagination Unbound*, reviewed by Catherine McClenahan
- 25 Bryan Aubrey. *Watchmen of Eternity: Blake's Debt to Jacob Boehme*, reviewed by George Mills Harper
- 27 Stanley Gardner. *Blake's Innocence and Experience Retraced*, reviewed by Nelson Hilton
- 29 Harold Bloom, ed. *William Blake: Modern Critical Views* Nelson Hilton, ed. *Essential Articles for the Study of William Blake, 1970-1984*, reviewed by Peter Otto
- 31 Desmond King-Hele. *Erasmus Darwin and the Romantic Poets*, reviewed by David Worrall

- 33 *A Catalogue of the Lawrence Lande William Blake Collection in the Department of Rare Books and Special Collections of the McGill University Libraries*, reviewed by G. E. Bentley, Jr.
- 34 Robert Gleckner. *Blake and Spenser*, reviewed by George Anthony Rosso, Jr.
- 37 Abby Robinson. *The Dick and Jane*, reviewed by Morris Eaves
- 41 Michael Ferber. *The Social Vision of William Blake*, reviewed by Edward Larrissy
- 43 Mark Bracher. *Being Form'd: Thinking Through Blake's Milton*, reviewed by Brian Wilkie
- 44 Sven Bruntjen. *John Boydell, A Study of Art Patronage and Printselling in Georgian London*, reviewed by Louise Lippincott

---

## CONTRIBUTORS

---

G. E. BENTLEY, JR., University of Toronto, is publishing *Blake Records Supplement* (Oxford, perhaps 1987), as well as works on Richard and James Edwards, Thomas Macklin, and George Cumberland.

MORRIS EAVES, now at the University of Rochester, occasionally taught detective fiction at the University of New Mexico. He recently co-edited *Romanticism and Contemporary Criticism* (Cornell 1986) with Michael Fischer.

ROBERT N. ESSICK, Professor of English, University of California, Riverside, is both a frequent writer on and an avid collector of Blake's work.

ROBERT F. GLECKNER, Professor of English and Director of Graduate Studies in English at Duke University, is currently working on a monograph study of *The Marriage of Heaven and Hell*.

JEAN H. HAGSTRUM has just completed a two-year stay at the National Humanities Center as a Senior Mellon Fellow and will spend September and part of October at the Rockefeller Center in Bellagio, Italy.

GEORGE MILLS HARPER is R. O. Lawton Distinguished Professor of English at Florida State University. His latest book is a two-volume study of *The Making of Yeats's A Vision*.

NELSON HILTON, Review Editor for *Blake*, is pleased to be in such company.

MARY V. JACKSON is Associate Professor of English at the City College of New York—CUNY. She is currently working on a study of memory, imagination, and language in Blake's early poetry.

**EDWARD LARRISSY**, Lecturer in English at the University of Warwick, is writing a book on contemporary British and American poetry.

**LOUISE LIPPINCOTT**, Associate Curator of Paintings at the J. Paul Getty Museum, is the author of *Selling Art in Georgian London: The Rise of Arthur Pond* (Yale, 1983).

**CATHERINE McCLENAHAN**, Assistant Professor of English at Marquette University, has published several articles and reviews on speculative fiction and is now completing a book on *Jerusalem*.

**ANNE K. MELLOR**, Professor of English and Acting Director of Women's Studies at the University of California, Los Angeles, has recently completed a study of the fiction of Mary Shelley.

**PETER OTTO** teaches English at the University of Adelaide. He recently completed a doctoral dissertation concerned with the relationship between Los, time, and eternity in Blake's later poetry.

**GEORGE ANTHONY ROSSO, JR.**, Assistant Professor of English at Southern Connecticut State University at New Haven, has recently completed a dissertation entitled *Blake's Prophetic Workshop: Narrative, History, and Apocalypse in The Four Zoas*.

**CHARU SHEEL SINGH**, Reader in English, Kashi Vidyapith University, Varanasi, India, has published two volumes of poetry as well as *The Chariot of Fire* (1981). He will be a post-doctoral fellow at Yale University during 1987-88.

**BRIAN WILKIE**, Professor of English at the University of Arkansas, is co-editor (with James Hurt) of *Literature of the Western World*, and editor of *The Aeneid of Virgil*, translated by Rolfe Humphries.

**DAVID WORRALL**, Senior Lecturer in English at St. Mary's College, Strawberry Hill, England, is currently assisting David V. Erdman on an edition of Byron's *Childe Harold* for Garland's *Manuscripts of the Younger Romantics*.

---

## EDITORS

---

**Editors:** Morris Eaves, University of Rochester, and Morton D. Paley, University of California, Berkeley.

**Bibliographer:** Detlef W. Dörrbecker, Universität Trier, West Germany.

**Review Editor:** Nelson Hilton, University of Georgia, Athens.

**Associate Editor for Great Britain:** Frances A. Carey, Assistant Curator, Department of Prints and Draw-

ings, British Museum.

**Production Office:** Morris Eaves, Department of English, University of Rochester, Rochester, NY 14627, Telephone 716/275-3820.

Morton D. Paley, Department of English, University of California, Berkeley, CA 94720.

Detlef W. Dörrbecker, Universität Trier, FB III Kunstgeschichte, Postfach 3825, 5500 Trier, West Germany.  
Nelson Hilton, Department of English, University of Georgia, Athens, GA 30602.

Frances A. Carey, Department of Prints and Drawings, British Museum, Great Russell Street, London WC1B 3DG, United Kingdom.

---

## INFORMATION

---

**Managing Editor:** Patricia Neill.

*Blake/An Illustrated Quarterly* is published under the sponsorship of the Department of English, University of Rochester.

**Subscriptions** are \$18 for institutions, \$15 for individuals. All subscriptions are by the volume (1 year, 4 issues) and begin with the summer issue. Subscription payments received after the summer issue will be applied to the 4 issues of the current volume. Foreign addresses (except Canada and Mexico) require a \$3 per volume postal surcharge for surface mail, a \$10 per volume surcharge for air mail delivery. U.S. currency or international money order necessary. Make checks payable to *Blake/An Illustrated Quarterly*. Address all subscription orders and related communications to Patricia Neill, *Blake*, Department of English, University of Rochester, Rochester, NY 14627, USA.

Many **back issues** are available at a reduced price. Address Patricia Neill for a list of issues and prices.

**Manuscripts** are welcome. Send two copies, typed and documented according to the forms suggested in the MLA Style Sheet, 2nd ed., to either of the editors: Morris Eaves, Dept. of English, University of Rochester, Rochester, NY 14627; Morton D. Paley, Dept. of English, University of California, Berkeley, CA 94720.

**International Standard Serial Number:** 0006-453x. *Blake/An Illustrated Quarterly* is indexed in the Modern Language Association's International Bibliography, the Modern Humanities Research Association's Annual Bibliography of English Language and Literature, *English Language Notes'* annual Romantic Bibliography, ART bibliographies MODERN, American Humanities Index, the Arts and Humanities Citation Index, and Current Contents.