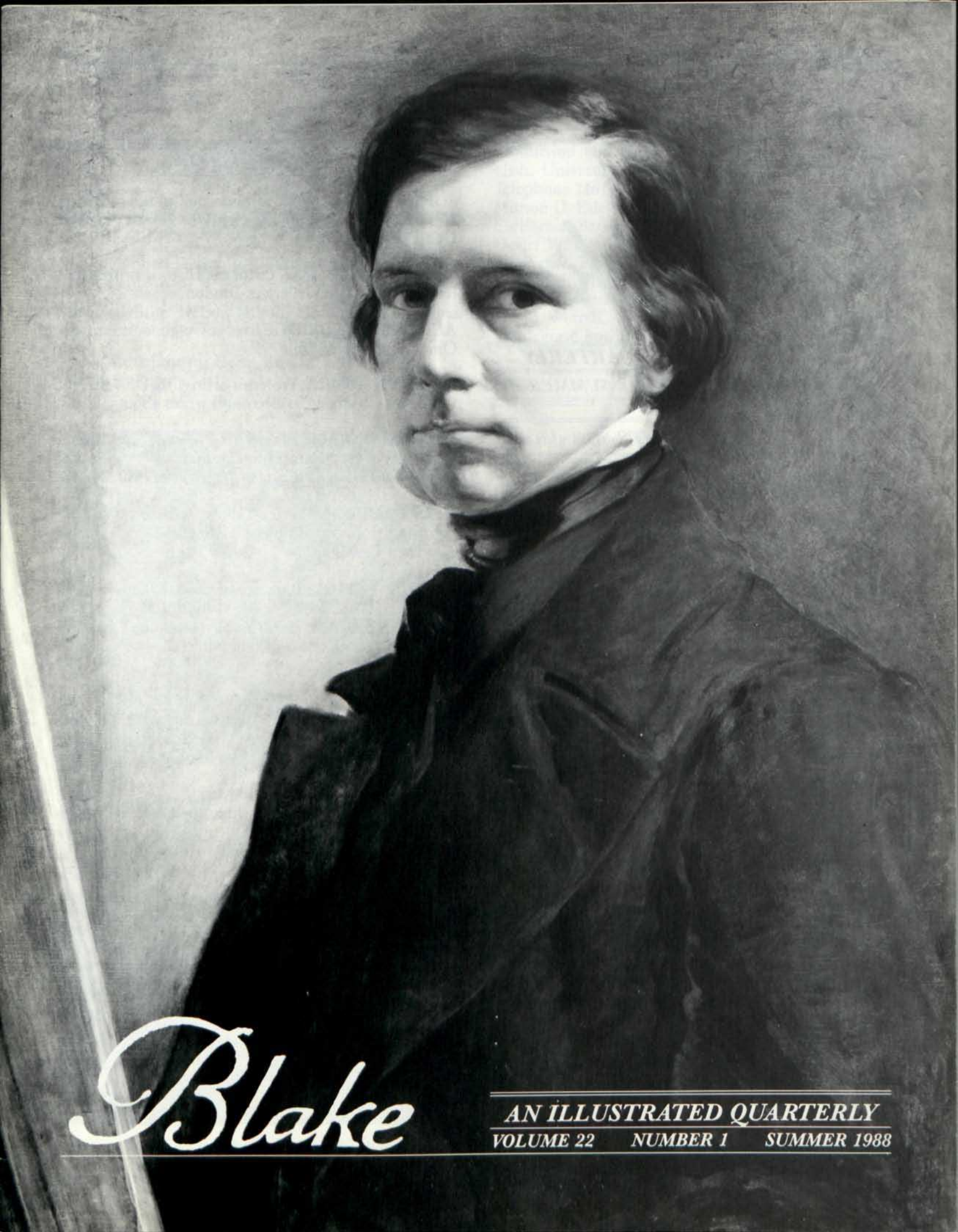


AN ILLUSTRATED QUARTERLY
BLAKE

C O N T E N T S

Blake/An Illustrated Quarterly, Volume 22, Issue 1, Summer 1988, pp. 1-3





Blake

AN ILLUSTRATED QUARTERLY
VOLUME 22 NUMBER 1 SUMMER 1988

Blake

AN ILLUSTRATED QUARTERLY

VOLUME 22 NUMBER 1 SUMMER 1988

CONTENTS

- 4 Blake in the Marketplace, 1987
by Robert N. Essick

MINUTE PARTICULARS

- 16 "Under the Hill"
by Nelson Hilton
- 17 Footnotes on the Huntington Blakes
by Martin Butlin

DISCUSSION

- 19 Reply to Morris Eaves' Review of *The Dick and Jane*
by Aethelred Eldridge

REVIEWS

- 20 Raymond Lister, *Paintings of Samuel Palmer and Paintings of William Blake*, reviewed by Shelley Bennett
- 22 Morton D. Paley, *The Apocalyptic Sublime*, reviewed by Joseph Wittreich
- 25 Bette Charlene Werner, *Blake's Vision of the Poetry of Milton*, reviewed by Janet Warner
- 26 David V. Erdman, *Commerce des Lumieres: John Oswald and the British in Paris, 1790-1793*, reviewed by Michael Ferber
- 29 A Symposium on William Blake and His Circle, reported by Anne K. Mellor

NEWSLETTER

- 30 *Birthday Wishes to Marià Manent, A Blake Bicentenary Lecture, Blake in Britain 1988*

©1988 Morris Eaves and Morton D. Paley

CONTRIBUTORS

SHELLEY M. BENNETT is Associate Curator of British and Continental Art of the Henry E. Huntington Art Gallery.

MARTIN BUTLIN is Keeper of the Historic British Collection at the Tate Gallery in London.

AETHELRED ELDRIDGE lives at Golgonooza-on-the-Ohio, in Millfield, Ohio.

ROBERT N. ESSICK, Professor of English, University of California, Riverside, collects and writes about Blake.

MICHAEL FERBER, Associate Professor of English, University of New Hampshire, Durham, is the author of *The Social Vision of William Blake* (Princeton, 1985).

NELSON HILTON, Review Editor for *Blake*, is still re-adjusting from his complete reading of Donald Ault's *Narrative Unbound*.

ANNE K. MELLOR, Professor of English, University of California, Los Angeles, is the author of *Mary Shelley: Her Life, Her Fiction, Her Monsters* (Methuen Press) and *Romanticism and Feminism* (Indiana UP), both appearing in 1988.

JANET WARNER, Professor of English, teaches at Glendon College, York University, and is the author of *Blake and the Language of Art*. She is currently writing a book on Emily Carr (1871-1945), a Canadian painter and writer.

JOSEPH WITTEICH is Distinguished Professor of English at The Graduate Center, City University of New York, and author of *Feminist Milton* (Cornell UP, 1987).



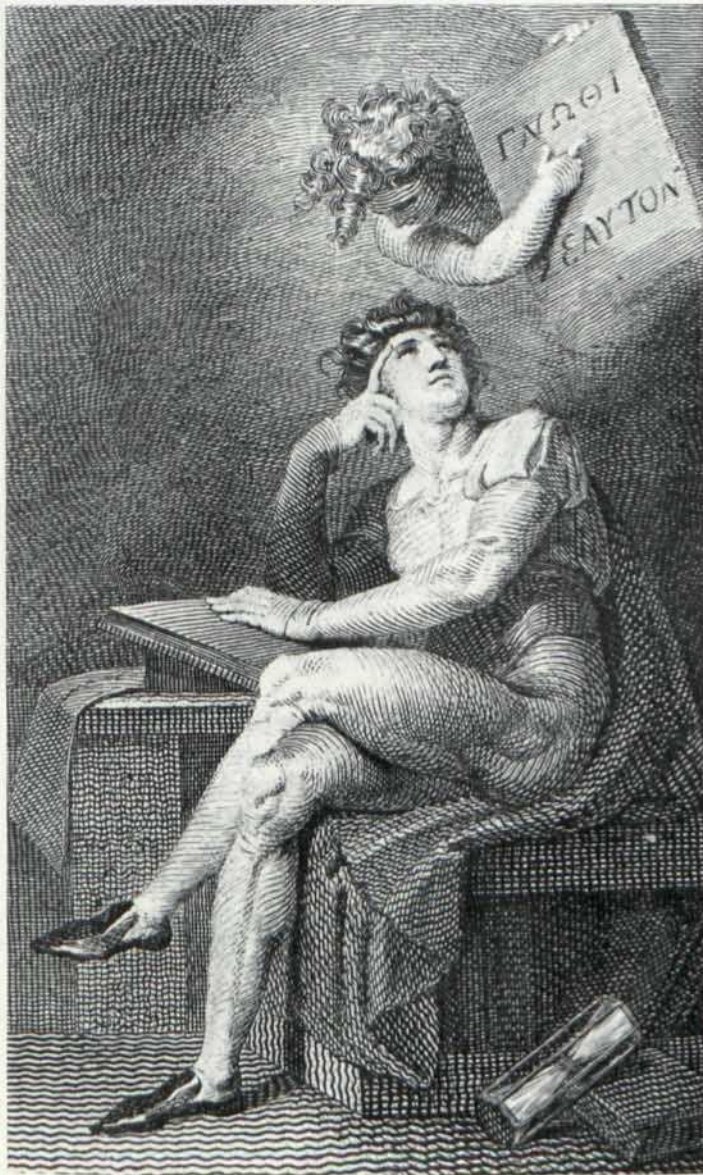
EDITORS

Editors: Morris Eaves, University of Rochester, and Morton D. Paley, University of California, Berkeley.

Bibliographer: Detlef W. Dörrbecker, Universität Trier, West Germany.

Review Editor: Nelson Hilton, University of Georgia, Athens.

Associate Editor for Great Britain: David Worrall, St. Mary's College.



Production Office: Morris Eaves, Department of English, University of Rochester, Rochester, NY 14627, Telephone 716/275-3820.

Morton D. Paley, Department of English, University of California, Berkeley, CA 94720.

Detlef W. Dörrbecker, Universität Trier, FB III Kunstgeschichte, Postfach 3825, 5500 Trier, West Germany.

Nelson Hilton, Department of English, University of Georgia, Athens, GA 30602.

David Worrall, St. Mary's College, Strawberry Hill, Waldegrave Road, Twickenham TW1 4SX, England.

INFORMATION

Managing Editor: Patricia Neill.

Blake / An Illustrated Quarterly is published under the sponsorship of the Department of English, University of Rochester.

Subscriptions are \$18 for institutions, \$15 for individuals. All subscriptions are by the volume (1 year, 4 issues) and begin with the summer issue. Subscription payments received after the summer issue will be applied to the 4 issues of the current volume. Foreign addresses (except Canada and Mexico) require a \$3 per volume postal surcharge for surface mail, a \$10 per volume surcharge for air mail delivery. U.S. currency or international money order necessary. Make checks payable to *Blake / An Illustrated Quarterly*. Address all subscription orders and related communications to Patricia Neill, *Blake*, Department of English, University of Rochester, Rochester, NY 14627, USA.

Many back issues are available at a reduced price. Address Patricia Neill for a list of issues and prices.

Manuscripts are welcome. Send two copies, typed and documented according to the forms suggested in the MLA Style Sheet, 2nd ed., to either of the editors: Morris Eaves, Dept. of English, University of Rochester, Rochester, NY 14627; Morton D. Paley, Dept. of English, University of California, Berkeley, CA 94720.

International Standard Serial Number: 0006-453x. *Blake / An Illustrated Quarterly* is indexed in the Modern Language Association's International Bibliography, the Modern Humanities Research Association's Annual Bibliography of English Language and Literature, *English Language Notes'* annual Romantic Bibliography, American Humanities Index, the Arts and Humanities Citation Index, and Current Contents.