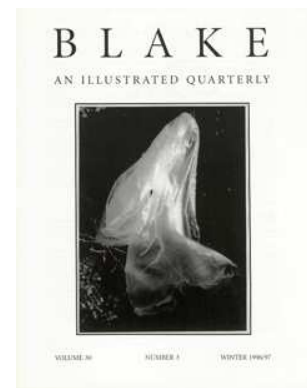


AN ILLUSTRATED QUARTERLY  
**BLAKE**

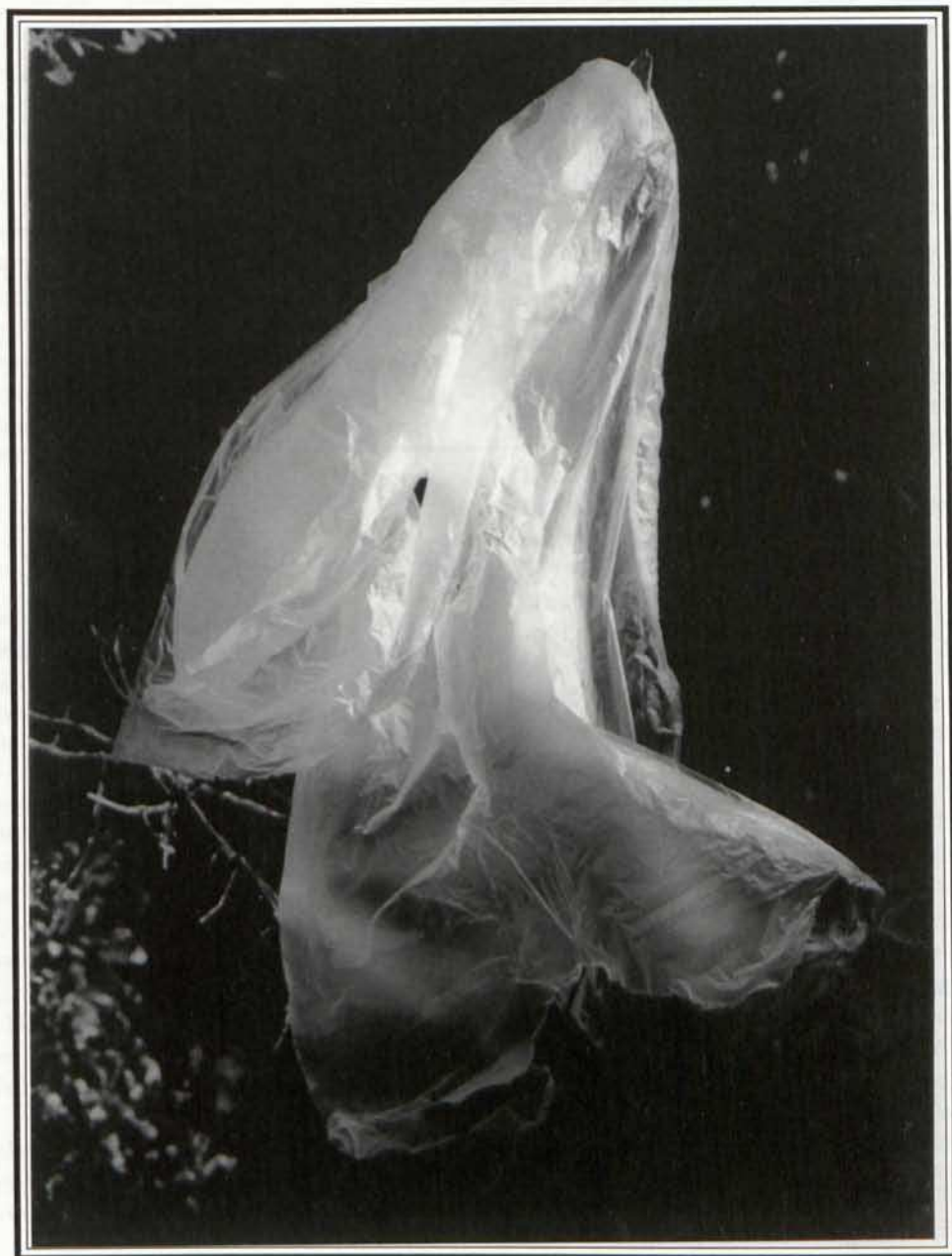
C O N T E N T S

Blake/An Illustrated Quarterly, Volume 30, Issue 3, Winter 1996/7, pp. 65-67



# B L A K E

AN ILLUSTRATED QUARTERLY



VOLUME 30

NUMBER 3

WINTER 1996/97

# Blake

## AN ILLUSTRATED QUARTERLY

VOLUME 30

NUMBER 3

WINTER 1996/97

### C O N T E N T S

---

#### Article

- Jerusalem and the Origins of Patriarchy*  
by Marc Kaplan 68

#### Review

- Veils, Infinity, a Roof, and "One thought"  
in Contemporary Art: A Note on Four Exhibitions  
by D. W. Dörrbecker 82

#### Minute Particulars

- Seeing Thel as Serpent  
by Hilda Hollis 87
- The Seduction of Self-Abnegation in  
*The Book of Thel*  
by Deborah McCollister 90

#### Newsletter

- Jah Wobble Inspired by Blake, Armand Hammer  
Museum Exhibition of the Boydell Shakespeare  
Gallery, New Issue of Romanticism on the Net,  
Blake's Notebook Facsimile Available, Romantic  
Circles Web Site, Call for Papers: Carolinas  
Symposium on British Studies, Correction:  
Blake Archive URL* 95

## C O N T R I B U T O R S

D. W. DÖRRBECKER teaches in the department of art history at the University of Trier. He began to publish on Blake in 1975, and his recent efforts include the Blake Trust edition of *The Continental Prophecies*.

HILDA HOLLIS is writing her thesis on George Elliot and Mikhail Bakhtin with the support of a SSHRCC Doctoral Fellowship at McMaster University. She has published essays in *Milton Studies* and *Various Atwoods*, and has an article forthcoming in *Victorian Poetry*.

MARC KAPLAN teaches at Pepperdine University and Santa Monica College in Los Angeles. Formerly a screenwriter, he authored the script which became the film *Fast Break* (Columbia Pictures, 1979). A previous article on Blake, "Blake's *Milton*: The Metaphysics of Gender," appeared in *Nineteenth Century Contexts* in 1995.

DEBORAH MCCOLLISTER is Professor of English at Dallas Baptist University. Recent publications include articles on Wilde, Bunyan, and Tennyson. A current project is a tour for students and friends to Christian and literary sites in southern England, a happy task which she hopes to repeat every few years.

## E D I T O R S

EDITORS: Morris Eaves and Morton D. Paley

BIBLIOGRAPHER: G. E. Bentley, Jr.

REVIEW EDITOR: Nelson Hilton

ASSOCIATE EDITOR FOR GREAT BRITAIN: David Worrall

PRODUCTION OFFICE: Patricia Neill, Department of English, University of Rochester, Rochester, NY 14627

MANAGING EDITOR: Patricia Neill

TELEPHONE 716/275-3820

FAX 716/442-5769

PRODUCTION OFFICE EMAIL: pnpj@dbv.cc.rochester.edu

**Morris Eaves**, Department of English, University of Rochester, Rochester NY 14627

Email: meav@dbv.cc.rochester.edu

**Morton D. Paley**, Department of English, University of California, Berkeley CA 94720

Email: mpaley@uclink4.berkeley.edu

**G. E. Bentley, Jr.**, 246 MacPherson Avenue, Toronto, Ontario M4V 1A2. The University of Toronto declines to forward mail.

**Nelson Hilton**, Department of English, University of Georgia, Athens, GA 30602

Email: nhilton@uga.cc.uga.edu

**David Worrall**, St. Mary's College, Strawberry Hill, Waldegrave Road, Twickenham TW1 4SX England

Email: worralld@mailnt.smuc.ac.UK

## I N F O R M A T I O N

*BLAKE/AN ILLUSTRATED QUARTERLY* is published under the sponsorship of the Department of English, University of Rochester.

SUBSCRIPTIONS are \$50 for institutions, \$25 for individuals. All subscriptions are by the volume (1 year, 4 issues) and begin with the summer issue. Subscription payments received after the summer issue will be applied to the 4 issues of the current volume. Foreign addresses (except Canada and Mexico) require an \$8 per volume postal surcharge for surface, an \$18 per volume surcharge for air mail delivery. U.S. currency or international money order necessary. Make checks payable to *Blake/An Illustrated Quarterly*. Address all subscription orders and related communications to Patricia Neill, *Blake*, Department of English, University of Rochester, Rochester, NY 14627.

BACK ISSUES are available at a reduced price. Address Patricia Neill for a list of issues and prices.

MANUSCRIPTS are welcome. Send two copies, typed and documented according to forms suggested in *The MLA Style Manual*, to either of the editors: Morris Eaves, Dept. of English, University of Rochester, Rochester, NY 14627; Morton D. Paley, Dept. of English, University of California, Berkeley, CA 94720.

INTERNATIONAL STANDARD SERIAL NUMBER: 0160-628x. *Blake/An Illustrated Quarterly* is indexed in the Modern Language Association's International Bibliography, the Modern Humanities Research Association's Annual Bibliography of English Language and Literature, *The Romantic Movement: A Selective and Critical Bibliography* (ed. David V. Erdman et al.), American Humanities Index, Arts and Humanities Citation Index, Current Contents and the *Bibliography of the History of Art*.

© 1996 Copyright Morris Eaves and Morton D. Paley

COVER ILLUSTRATION: Verena Immenhauser, "Untitled," a figural veil/a veiled figure, executed in preparation of the installation shown at Berné, Switz.