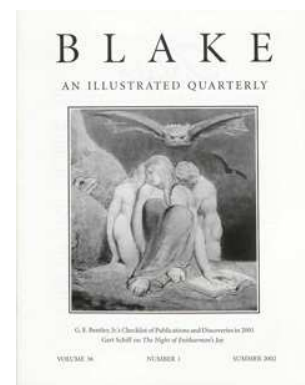


AN ILLUSTRATED QUARTERLY
BLAKE

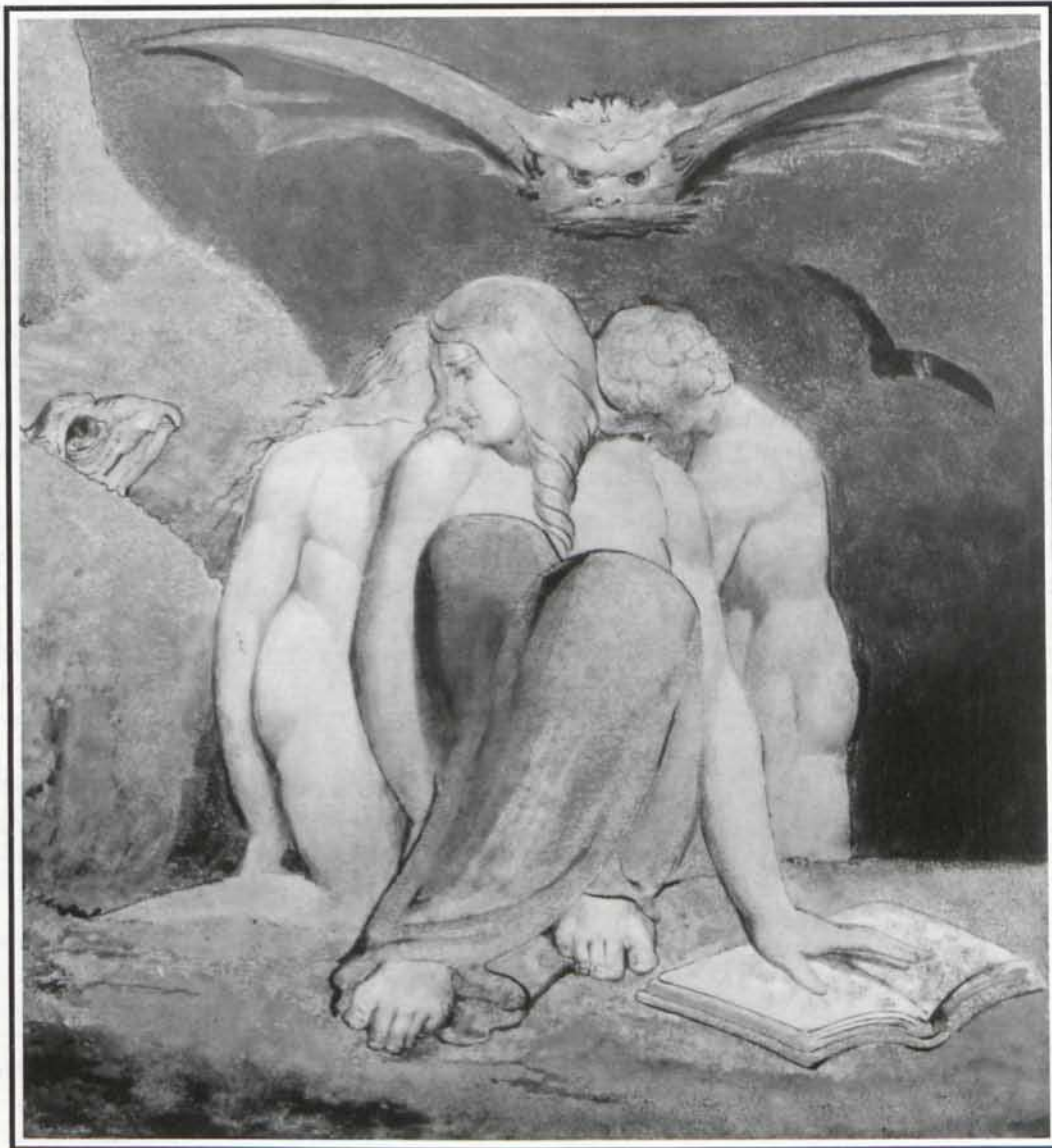
C O N T E N T S

Blake/An Illustrated Quarterly, Volume 36, Issue 1, Summer 2002, pp. 1-3



BLAKE

AN ILLUSTRATED QUARTERLY



G. E. Bentley, Jr.'s Checklist of Publications and Discoveries in 2001

Gert Schiff on *The Night of Enitharmon's Joy*

VOLUME 36

NUMBER 1

SUMMER 2002

Blake

AN ILLUSTRATED QUARTERLY

www.blakequarterly.org

VOLUME 36

NUMBER 1

SUMMER 2002

C O N T E N T S

Article

William Blake and His Circle: A Checklist of
Publications and Discoveries in 2001
By G.E. Bentley, Jr.

4

Minute Particular

The Night of Enitharmon's Joy
Catalogue Entry by Gert Schiff

38

A D V I S O R Y B O A R D

G. E. Bentley, Jr., University of Toronto, retired
Martin Butlin, London
Detlef W. Dörrbecker, University of Trier
Robert N. Essick, University of California, Riverside
Angela Esterhammer, University of Western Ontario

Nelson Hilton, University of Georgia
Anne K. Mellor, University of California, Los Angeles
Joseph Viscomi, University of North Carolina at Chapel Hill
David Worrall, St. Mary's College

C O N T R I B U T O R S

G.E. BENTLEY, JR.'s latest book is *The Stranger from Paradise: A Biography of William Blake* (Yale University Press, 2001). The second edition of his *Blake Records* is scheduled for publication by Yale in the autumn of 2002.

The late GERT SCHIFF was professor of art history at New York University's Institute of Fine Arts. He wrote the definitive Fuseli catalogue raisonné, and was the author and editor of studies on Picasso and Thomas Rowlandson, amongst others.

E D I T O R S

EDITORS: Morris Eaves and Morton D. Paley

BIBLIOGRAPHER: G. E. Bentley, Jr.

REVIEW EDITOR: Nelson Hilton

ASSOCIATE EDITOR FOR GREAT BRITAIN: David Worrall

PRODUCTION OFFICE: Department of English, Morey Hall 410, University of Rochester, Rochester NY 14627-0451

MANAGING EDITOR: Sarah Jones

TELEPHONE: 585/275-3820 FAX: 585/442-5769

PRODUCTION OFFICE EMAIL: sjns@mail.rochester.edu

Morris Eaves, Department of English, University of Rochester, Rochester NY 14627-0451
Email: meav@mail.rochester.edu

Morton D. Paley, Department of English, University of California, Berkeley CA 94720-1030
Email: mpaley@socrates.berkeley.edu

G. E. Bentley, Jr., 246 MacPherson Avenue, Toronto, Ontario M4V 1A2 Canada. The University of Toronto declines to forward mail.
Email: GBentley@chass.utoronto.ca

Nelson Hilton, Department of English, University of Georgia, Athens GA 30602
Email: nhilton@english.uga.edu

David Worrall, St. Mary's College, Strawberry Hill, Waldegrave Road, Twickenham TW1 4SX England
Email: worralld@smuc.ac.uk

I N F O R M A T I O N

BLAKE / AN ILLUSTRATED QUARTERLY is published under the sponsorship of the Department of English, University of Rochester. Subscriptions are \$60 for institutions, \$30 for indi-

viduals. All subscriptions are by the volume (1 year, 4 issues) and begin with the summer issue. Subscription payments received after the summer issue will be applied to the 4 issues of the current volume. Addresses outside the U.S., Canada, and Mexico require a \$10 per volume postal surcharge for surface, and \$25 per volume surcharge for air mail delivery. Credit card payment available for non-U.S. subscribers. Make checks payable to *Blake/An Illustrated Quarterly*. Address all subscription orders and related communications to Sarah Jones, *Blake*, Department of English, University of Rochester, Rochester NY 14627-0451. Back issues are available; address Sarah Jones for information on issues and prices, or consult the web site.

MANUSCRIPTS are welcome in either hard copy or electronic form. Send two copies, typed and documented according to forms suggested in *The MLA Style Manual*, to either of the editors: Morris Eaves, Dept. of English, University of Rochester, Rochester NY 14627-0451; Morton D. Paley, Dept. of English, University of California, Berkeley CA 94720-1030. No articles will be returned unless accompanied by a stamped self-addressed envelope. For electronic submissions, you may send a diskette, or you may send your article as an attachment to an email message. The preferred file format is RTF. Other formats are usually acceptable.

INTERNATIONAL STANDARD SERIAL NUMBER: 0160-628x. *Blake/An Illustrated Quarterly* is indexed in the Modern Language Association's International Bibliography, the Modern Humanities Research Association's Annual Bibliography of English Language and Literature, American Humanities Index, Arts and Humanities Citation Index, Current Contents and the *Bibliography of the History of Art*.

© 2002 Copyright Morris Eaves and Morton D. Paley

Cover: Detail of William Blake, *The Night of Enitharmon's Joy (Triple Hecate)*. Reproduced by permission of the National Gallery of Scotland.