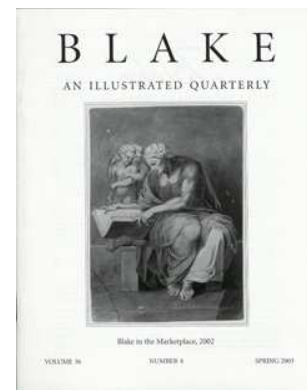


AN ILLUSTRATED QUARTERLY  
**BLAKE**

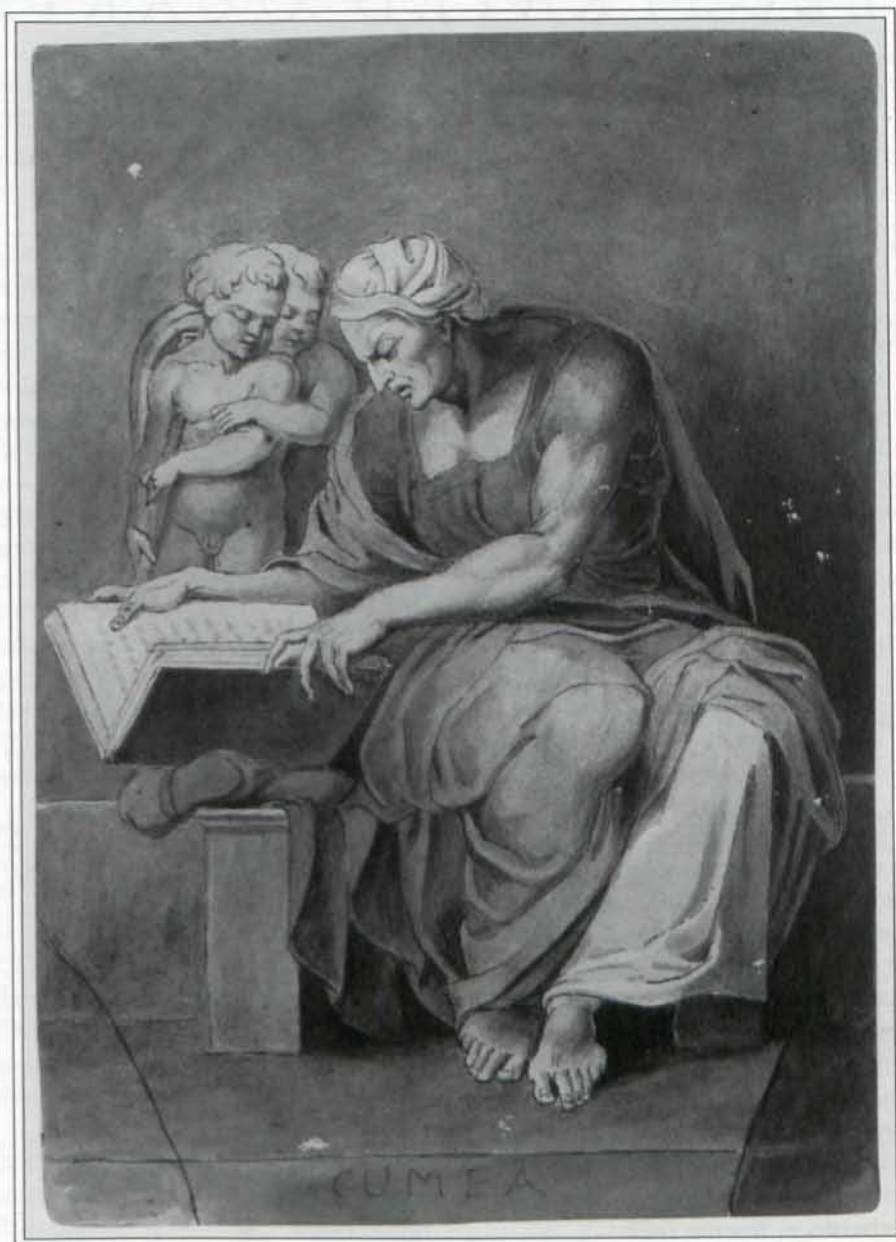
C O N T E N T S

Blake/An Illustrated Quarterly, Volume 36, Issue 4, Spring 2003, pp. 113-115



# BLAKE

AN ILLUSTRATED QUARTERLY



Blake in the Marketplace, 2002

VOLUME 36

NUMBER 4

SPRING 2003

# Blake

AN ILLUSTRATED QUARTERLY

www.blakequarterly.org

VOLUME 36

NUMBER 4

SPRING 2003

## C O N T E N T S

---

### Article

Blake in the Marketplace, 2002  
By Robert N. Essick

116

### Minute Particulars

The Sound of "Holy Thursday"  
By W. H. Stevenson

137

Erdman's Pagination of *The Four Zoas*  
By Wayne C. Ripley

140

### Reviews

Kathleen Lundeen, *Knight of the Living Dead:  
William Blake and the Problem of Ontology*  
Reviewed by Jason Snart

144

Barbara Lachman, *Voices for Catherine Blake:  
A Gathering*  
Reviewed by Eugenie R. Freed

149

### Newsletter

Honors; *Cambridge Companion to Blake*

151

---

## A D V I S O R Y B O A R D

G. E. Bentley, Jr., University of Toronto, retired  
Martin Butlin, London  
Detlef W. Dörrbecker, University of Trier  
Robert N. Essick, University of California, Riverside  
Angela Esterhammer, University of Western Ontario

Nelson Hilton, University of Georgia  
Anne K. Mellor, University of California, Los Angeles  
Joseph Viscomi, University of North Carolina at Chapel Hill  
David Worrall, St. Mary's College



## C O N T R I B U T O R S

ROBERT N. ESSICK teaches English literature at the University of California, Riverside. He has been collecting and writing about Blake for over 30 years.

EUGENIE R. FREED is a Research Fellow in English Literature at the School of Languages of the University of the Witwatersrand, Johannesburg, South Africa. Though her current project concerns women's writing in the sixteenth and seventeenth centuries, her interest in Blake is still burning bright.

WAYNE C. RIPLEY is a graduate student at the University of Rochester. He is writing his dissertation on the relationship of *The Four Zoas* to Edward Young and eighteenth-century religious poetry.

JASON SMART currently teaches English at the College of DuPage in Glen Ellyn, Illinois. His research focuses on William Blake's marginalia and issues of materiality, textuality, and the history of book production. He has had work on Blake accepted in *History of European Ideas*, *Visible Language*, the *Huntington Library Quarterly*, and *European Romantic Review*. He has held research fellowships for study at the Huntington Library, the Yale Center for British Art, and at collections in London and Cambridge.

WILLIAM STEVENSON, besides editing *Blake: The Complete Poems* (Longman: 1971 & 1989) and the Blake selection in the Penguin Classics series, among other things, has taught at universities in three continents, but has now retired from the battlefield. He still cannot escape Blake, and is at present working on a revision of the *Complete Poems* with the 2007 quarter-millennial anniversary in his sights.

## E D I T O R S

EDITORS: Morris Eaves and Morton D. Paley  
BIBLIOGRAPHER: G. E. Bentley, Jr.  
REVIEW EDITOR: Nelson Hilton  
ASSOCIATE EDITOR FOR GREAT BRITAIN: David Worrall

PRODUCTION OFFICE: Department of English, Morey 410,  
University of Rochester, Rochester NY 14627-0451  
MANAGING EDITOR: Sarah Jones sjns@mail.rochester.edu  
TELEPHONE: 585/275-3820 FAX: 585/442-5769

Morris Eaves, Department of English, University of  
Rochester, Rochester NY 14627-0451  
Email: meav@mail.rochester.edu

Morton D. Paley, Department of English, University of  
California, Berkeley CA 94720-1030  
Email: mpaley@socrates.berkeley.edu

G. E. Bentley, Jr., 246 MacPherson Avenue, Toronto,  
Ontario M4V 1A2 Canada.  
The University of Toronto declines to forward mail.  
Email: GBentley@chass.utoronto.ca

Nelson Hilton, Department of English, University of  
Georgia, Athens GA 30602  
Email: nhilton@english.uga.edu

David Worrall, St. Mary's College, Strawberry Hill,  
Waldegrave Road, Twickenham TW1 4SX England  
Email: worralld@smuc.ac.uk

## I N F O R M A T I O N

*BLAKE/AN ILLUSTRATED QUARTERLY* is published under the sponsorship of the Department of English, University of Rochester. Subscriptions are \$60 for institutions, \$30 for individuals. All subscriptions are by the volume (1 year, 4 issues) and begin with the summer issue. Subscription payments received after the summer issue will be applied to the 4 issues of the current volume. Addresses outside the U.S., Canada, and Mexico require a \$10 per volume postal surcharge for surface, and \$25 for airmail delivery. Credit card payment is available. Make checks payable to *Blake/An Illustrated Quarterly*. Address all subscription orders and related communications to Sarah Jones, *Blake*, Department of English, University of Rochester, Rochester NY 14627-0451. Back issues are available; address Sarah Jones for information on issues and prices, or consult the web site.

MANUSCRIPTS are welcome in either hard copy or electronic form. Send two copies, typed and documented according to forms suggested in *The MLA Style Manual*, and with pages numbered, to either of the editors: Morris Eaves, Dept. of English, University of Rochester, Rochester NY 14627-0451; Morton D. Paley, Dept. of English, University of California, Berkeley CA 94720-1030. No articles will be returned unless accompanied by a stamped self-addressed envelope. For electronic submissions, you may send a diskette, or you may send your article as an attachment to an email message; please number the pages of electronic submissions. The preferred file format is RTE; other formats are usually acceptable.

© 2003 Copyright Morris Eaves and Morton D. Paley

Cover: *Cumea*. A copy, attributed to Blake, of Michelangelo's fresco of the Cumean Sibyl in the Sistine Chapel. Photo courtesy of Sotheby's London.