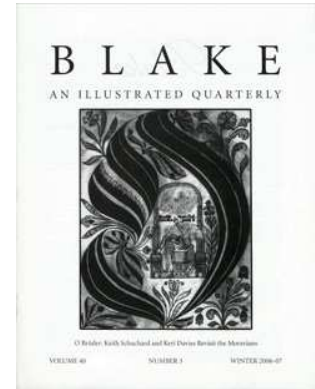


AN ILLUSTRATED QUARTERLY
BLAKE

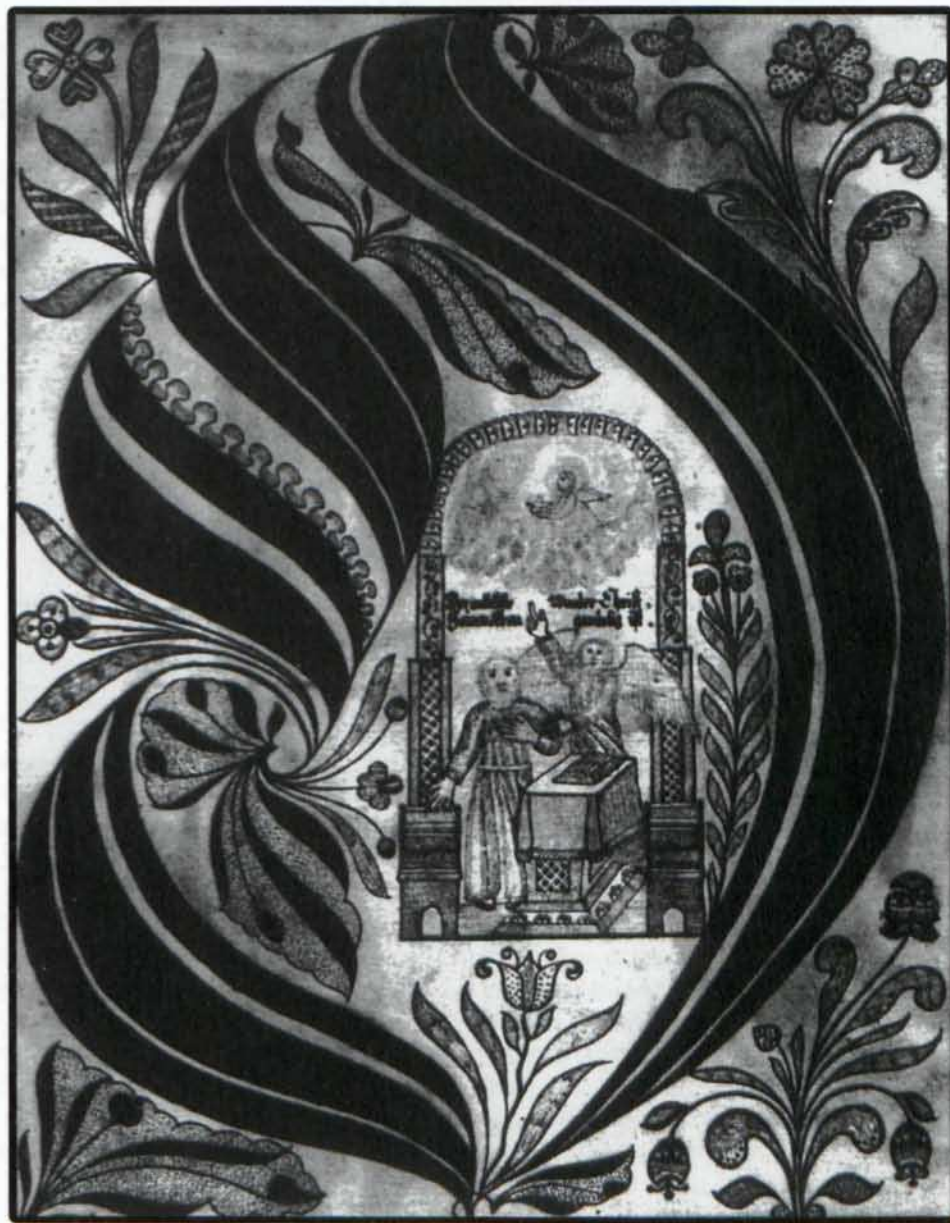
C O N T E N T S

Blake/An Illustrated Quarterly, Volume 40, Issue 3, Winter 2006/2007, pp.
81-83



BLAKE

AN ILLUSTRATED QUARTERLY



O Brüder: Keith Schuchard and Keri Davies Revisit the Moravians

VOLUME 40

NUMBER 3

WINTER 2006-07

Blake

AN ILLUSTRATED QUARTERLY

www.blakequarterly.org

VOLUME 40

NUMBER 3

WINTER 2006-07

C O N T E N T S

Articles

Young William Blake and the Moravian
Tradition of Visionary Art
By Marsha Keith Schuchard

84

Jonathan Spilsbury and the Lost Moravian History
of William Blake's Family
By Keri Davies

100

Minute Particular

An Analogue to the "Greatest Men" Passage
in *The Marriage of Heaven and Hell*
By Thomas R. Frosch

110

Newsletter

Events to Celebrate the 250th Anniversary
of Blake's Birth

111

A D V I S O R Y B O A R D

G. E. Bentley, Jr., University of Toronto, retired
Martin Butlin, London
Detlef W. Dörrbecker, University of Trier
Robert N. Essick, University of California, Riverside
Angela Esterhammer, University of Western Ontario

Nelson Hilton, University of Georgia
Anne K. Mellor, University of California, Los Angeles
Joseph Viscomi, University of North Carolina at Chapel Hill
David Worrall, The Nottingham Trent University

C O N T R I B U T O R S

MARSHA KEITH SCHUCHARD (keithschuchard@hotmail.com) has recently published *Why Mrs. Blake Cried: William Blake and the Sexual Basis of Spiritual Vision* (London: Century-Random House, 2006). She is currently completing a sequel to *Restoring the Temple of Vision: Cabalistic Freemasonry and Stuart Culture* (Leiden: Brill, 2002), which will cover British and international Masonic developments and their political and cultural ramifications from 1689 to 1750.

KERI DAVIES (keri.davies@ntu.ac.uk) is secretary of the Blake Society. He is currently research fellow in the Department of English, Nottingham Trent University.

THOMAS R. FROSCH (tfrosch@nyc.rr.com) is professor of English at Queens College (CUNY) and is the author of a book on Blake, *The Awakening of Albion* (Cornell University Press, 1974) and a forthcoming book, *Shelley and the Romantic Imagination: A Psychological Study* (University of Delaware Press).

Alexander S. Gourlay, Department of English, Rhode Island School of Design, 2 College Street, Providence RI 02903-2717
Email: agourlay@risd.edu

David Worrall, Faculty of Humanities, The Nottingham Trent University, Clifton Lane, Nottingham NG11 8NS UK
Email: david.worrall@ntu.ac.uk

I N F O R M A T I O N

BLAKE/AN ILLUSTRATED QUARTERLY is published under the sponsorship of the Department of English, University of Rochester. Subscriptions are \$60 for institutions, \$30 for individuals. All subscriptions are by the volume (1 year, 4 issues) and begin with the summer issue. Subscription payments received after the summer issue will be applied to the current volume. Addresses outside the US, Canada, and Mexico require a \$15 per volume postal surcharge for surface delivery, or \$20 for airmail. Credit card payment is available. Make checks payable to *Blake/An Illustrated Quarterly*. Address all subscription orders and related communications to Sarah Jones, *Blake*, Department of English, University of Rochester, Rochester NY 14627-0451. Back issues are available; address Sarah Jones for information on issues and prices, or consult the web site.

E D I T O R S

EDITORS: Morris Eaves and Morton D. Paley
BIBLIOGRAPHER: G. E. Bentley, Jr.
REVIEW EDITOR: Alexander S. Gourlay
ASSOCIATE EDITOR FOR GREAT BRITAIN: David Worrall

PRODUCTION OFFICE: Department of English, Morey 410,
University of Rochester, Rochester NY 14627-0451
MANAGING EDITOR: Sarah Jones sarah.jones@rochester.edu
TELEPHONE: 585/275-3820 FAX: 585/442-5769

Morris Eaves, Department of English, University of
Rochester, Rochester NY 14627-0451
Email: meav@mail.rochester.edu

Morton D. Paley, Department of English, University of
California, Berkeley CA 94720-1030
Email: mpaley@berkeley.edu

G. E. Bentley, Jr., 246 MacPherson Avenue, Toronto,
Ontario M4V 1A2 Canada

MANUSCRIPTS are welcome in either hard copy or electronic form. Send two copies, typed and documented according to forms suggested in the *MLA Style Manual*, and with pages numbered, to either of the editors. No articles will be returned unless accompanied by a stamped self-addressed envelope. For electronic submissions, you may send a disk, or send your article as an attachment to an email message; please number the pages of electronic submissions. The preferred file format is RTF; other formats are usually acceptable.

INTERNATIONAL STANDARD SERIAL NUMBER: 0160-628x. *Blake/An Illustrated Quarterly* is indexed in the Modern Language Association's International Bibliography, the Modern Humanities Research Association's Annual Bibliography of English Language and Literature, American Humanities Index, Arts and Humanities Citation Index, Current Contents and the *Bibliography of the History of Art*.

© 2007 Copyright Morris Eaves and Morton D. Paley

Cover: *Der Christen ABC* (1750), letter O (detail). Ephrata Cloister, Pennsylvania Historical and Museum Commission.