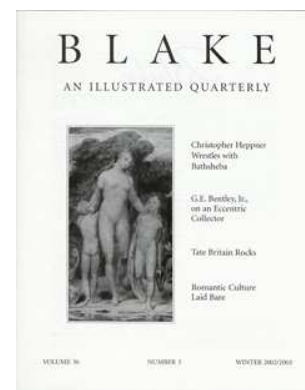


AN ILLUSTRATED QUARTERLY BLAKE

C O N T E N T S

Blake/An Illustrated Quarterly, Volume 36, Issue 3, Winter 2002/2003, pp.
73-75



B L A K E

AN ILLUSTRATED QUARTERLY



Christopher Heggen
Writes with
Barbara

G.E. Bentley, Jr.,
on an Eccentric
Collector

Time Britain Rocks

Romantic Culture
Laid Bare

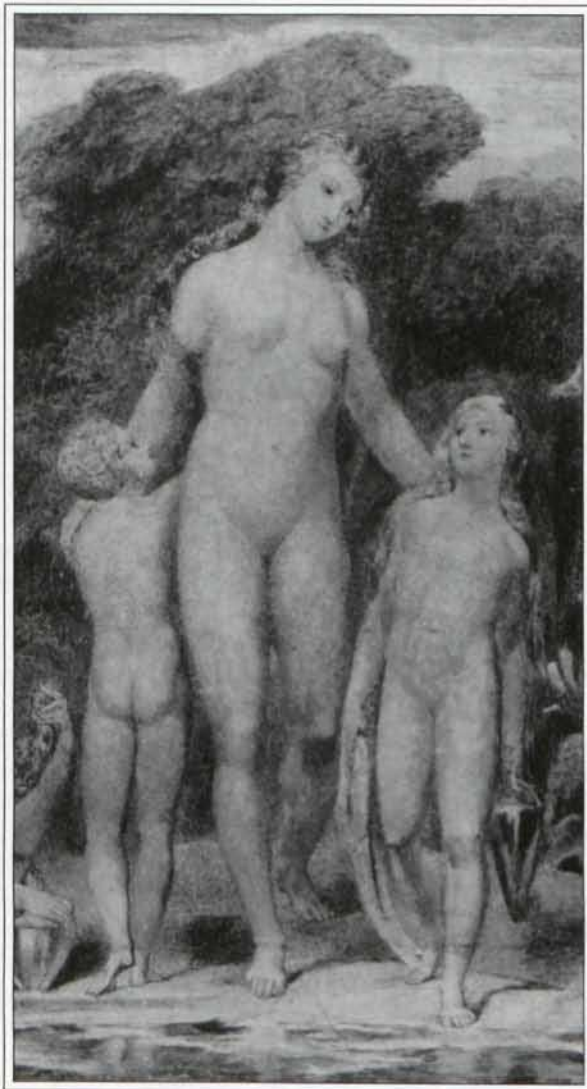
VOLUME 36

NUMBER 3

WINTER 2002/2003

BLAKE

AN ILLUSTRATED QUARTERLY



Christopher Heppner
Wrestles with
Bathsheba

G.E. Bentley, Jr.,
on an Eccentric
Collector

Tate Britain Rocks

Romantic Culture
Laid Bare

Blake

AN ILLUSTRATED QUARTERLY

www.blakequarterly.org

VOLUME 36

NUMBER 3

WINTER 2002/2003

C O N T E N T S

Articles

Bathsheba Revisited
By Christopher Heppner

76

Richard C. Jackson, Collector of Treasures and Wishes:
Walter Pater, Charles Lamb, William Blake
By G.E. Bentley, Jr.

92

Reviews

The Tygers of Wrath, concert held in conjunction
with an exhibition of Blake's works at Tate Britain,
2 February 2001

Reviewed by David Minckler

106

*An Oxford Companion to the Romantic Age:
British Culture 1776-1832*, Iain McCalman, general
ed.; Jon Mee, Gillian Russell, Clara Tuite, assoc. eds.
Reviewed by Nelson Hilton

107

Newsletter

Blake exhibition at the Huntington Library

91

A D V I S O R Y B O A R D

G. E. Bentley, Jr., University of Toronto, retired
Martin Butlin, London
Detlef W. Dörrbecker, University of Trier
Robert N. Essick, University of California, Riverside
Angela Esterhammer, University of Western Ontario

Nelson Hilton, University of Georgia
Anne K. Mellor, University of California, Los Angeles
Joseph Viscomi, University of North Carolina at Chapel Hill
David Worrall, St. Mary's College

CONTRIBUTORS

G. E. BENTLEY, JR., writes about Blake's life and his books. The second edition of his *Blake Records* (1969), incorporating *Blake Records Supplement* (1988) and much added matter, and a slightly revised paperback edition of his *The Stranger from Paradise* are to be published by Yale (they say) in the winter of 2003.

CHRISTOPHER HEPPNER retired from McGill University several years ago, and now thinks and occasionally writes on a number of subjects, still including Blake.

NELSON HILTON continues to teach and to administrate English at the University of Georgia.

DAVID MINCKLER has been an admirer of Blake since his master's thesis in the early 70s. He continues to work on a web site (www.blakewalk.org/main.htm) tracing Blake's walks through London.

EDITORS

EDITORS: Morris Eaves and Morton D. Paley

BIBLIOGRAPHER: G. E. Bentley, Jr.

REVIEW EDITOR: Nelson Hilton

ASSOCIATE EDITOR FOR GREAT BRITAIN: David Worrall

PRODUCTION OFFICE: Department of English, Morey 410, University of Rochester, Rochester NY 14627-0451

MANAGING EDITOR: Sarah Jones sjns@mail.rochester.edu

TELEPHONE: 585/275-3820 FAX: 585/442-5769

Morris Eaves, Department of English, University of Rochester, Rochester NY 14627-0451
Email: meav@mail.rochester.edu

Morton D. Paley, Department of English, University of California, Berkeley CA 94720-1030
Email: mpaley@socrates.berkeley.edu

G. E. Bentley, Jr., 246 MacPherson Avenue, Toronto, Ontario M4V 1A2 Canada.
The University of Toronto declines to forward mail.
Email: GBentley@chass.utoronto.ca

Nelson Hilton, Department of English, University of Georgia, Athens GA 30602
Email: nhilton@english.uga.edu

David Worrall, St. Mary's College, Strawberry Hill, Waldegrave Road, Twickenham TW1 4SX England
Email: worralld@smuc.ac.uk

INFORMATION

BLAKE/AN ILLUSTRATED QUARTERLY is published under the sponsorship of the Department of English, University of Rochester. Subscriptions are \$60 for institutions, \$30 for individuals. All subscriptions are by the volume (1 year, 4 issues) and begin with the summer issue. Subscription payments received after the summer issue will be applied to the 4 issues of the current volume. Addresses outside the U.S., Canada, and Mexico require a \$10 per volume postal surcharge for surface, and \$25 for airmail delivery. Credit card payment is available. Make checks payable to *Blake/An Illustrated Quarterly*. Address all subscription orders and related communications to Sarah Jones, *Blake*, Department of English, University of Rochester, Rochester NY 14627-0451. Back issues are available; address Sarah Jones for information on issues and prices, or consult the web site.

MANUSCRIPTS are welcome in either hard copy or electronic form. Send two copies, typed and documented according to forms suggested in *The MLA Style Manual*, and with pages numbered, to either of the editors: Morris Eaves, Dept. of English, University of Rochester, Rochester NY 14627-0451; Morton D. Paley, Dept. of English, University of California, Berkeley CA 94720-1030. No articles will be returned unless accompanied by a stamped self-addressed envelope. For electronic submissions, you may send a diskette, or you may send your article as an attachment to an email message; please number the pages of electronic submissions. The preferred file format is RTF; other formats are usually acceptable.

INTERNATIONAL STANDARD SERIAL NUMBER: 0160-628x. *Blake/An Illustrated Quarterly* is indexed in the Modern Language Association's International Bibliography, the Modern Humanities Research Association's Annual Bibliography of English Language and Literature, American Humanities Index, Arts and Humanities Citation Index, Current Contents and the *Bibliography of the History of Art*.

© 2003 Copyright Morris Eaves and Morton D. Paley

Cover: Detail of William Blake, *Bathsheba at the Bath*. © Tate, London 2001.