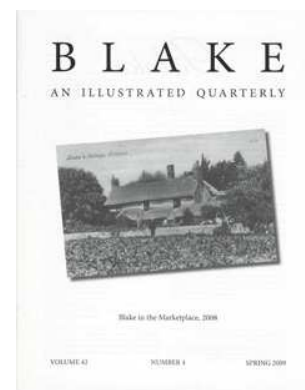


AN ILLUSTRATED QUARTERLY
BLAKE

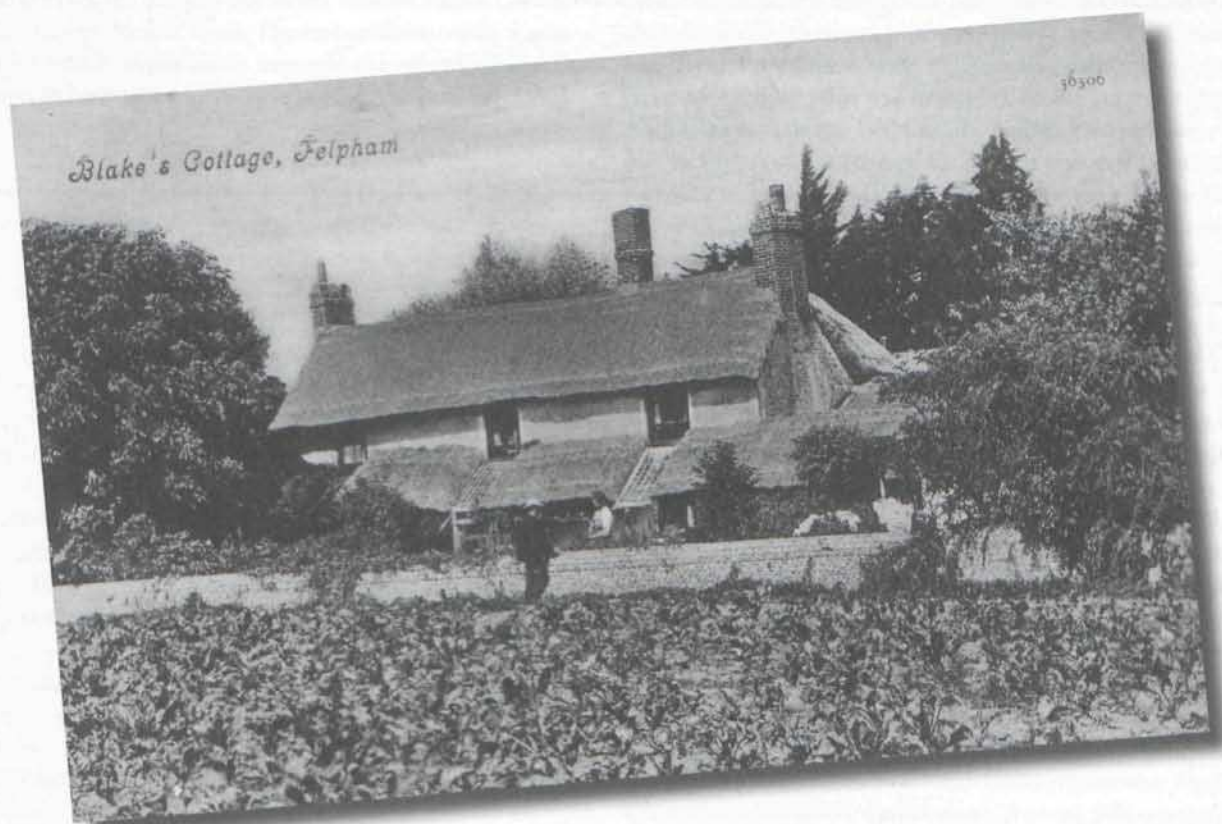
C O N T E N T S

Blake/An Illustrated Quarterly, Volume 42, Issue 4, Spring 2009, pp. 113-115, 160



BLAKE

AN ILLUSTRATED QUARTERLY



Blake in the Marketplace, 2008

VOLUME 42

NUMBER 4

SPRING 2009

Blake

AN ILLUSTRATED QUARTERLY

www.blakequarterly.org

VOLUME 42

NUMBER 4

SPRING 2009

C O N T E N T S

Articles

Blake in the Marketplace, 2008
By Robert N. Essick

116

William Blake's Miniature Portraits of the
Butts Family
By M. Crosby

147

Minute Particulars

The Man Who Married the Blakes
By Morton D. Paley

153

The American Blake Foundation
By G. E. Bentley, Jr.

155

Newsletter

Blake's Grave; Martin K. Nurmi, 1920–2008

158

A D V I S O R Y B O A R D

G. E. Bentley, Jr., University of Toronto, retired
Martin Butlin, London
Detlef W. Dörrbecker, University of Trier
Robert N. Essick, University of California, Riverside
Angela Esterhammer, University of Zürich

Nelson Hilton, University of Georgia
Anne K. Mellor, University of California, Los Angeles
Joseph Viscomi, University of North Carolina at Chapel Hill
David Worrall, The Nottingham Trent University

C O N T R I B U T O R S

ROBERT N. ESSICK, professor emeritus of English, UC Riverside, has been a contributor to *Blake* for forty years.

MARK CROSBY (m.crosby@qub.ac.uk) is the Leverhulme Early Career Fellow at Queen's University Belfast. He has just completed a monograph on Blake and patronage and is in the early stages of a research project on Blake's apprenticeship.

MORTON D. PALEY's (mpaley@berkeley.edu) most recent book is *Samuel Taylor Coleridge and the Fine Arts*, published by Oxford University Press in 2008.

G. E. BENTLEY, JR., has just published *William Blake's Conversations* (Edwin Mellen Press, December 2008), with a concordance which significantly expands the record of Blake's language in his writings.

E D I T O R S

EDITORS: Morris Eaves and Morton D. Paley
BIBLIOGRAPHER: G. E. Bentley, Jr.
REVIEW EDITOR: Alexander S. Gourlay
ASSOCIATE EDITOR FOR GREAT BRITAIN: David Worrall

PRODUCTION OFFICE: Department of English, Morey 410,
University of Rochester, Rochester NY 14627-0451
MANAGING EDITOR: Sarah Jones sarah.jones@rochester.edu
TELEPHONE: 585/275-3820 FAX: 585/442-5769

Morris Eaves, Department of English, University of
Rochester, Rochester NY 14627-0451
Email: meav@mail.rochester.edu

Morton D. Paley, Department of English, University of
California, Berkeley CA 94720-1030
Email: mpaley@berkeley.edu

G. E. Bentley, Jr., 246 MacPherson Avenue, Toronto,
Ontario M4V 1A2 Canada

Alexander S. Gourlay, Department of English, Rhode Island
School of Design, 2 College Street, Providence RI 02903-2717
Email: agourlay@risd.edu

David Worrall, Faculty of Humanities, The Nottingham
Trent University, Clifton Lane, Nottingham NG11 8NS UK
Email: david.worrall@ntu.ac.uk

I N F O R M A T I O N

BLAKE/AN ILLUSTRATED QUARTERLY is published under the sponsorship of the Department of English, University of Rochester. Subscriptions are \$60 for institutions, \$30 for individuals. All subscriptions are by the volume (1 year, 4 issues) and begin with the summer issue. Subscription payments received after the summer issue will be applied to the current volume. Addresses outside the US, Canada, and Mexico require a \$20 per volume postal surcharge for airmail delivery. Credit card payment is available. Make checks payable to *Blake/An Illustrated Quarterly*. Address all subscription orders and related communications to Sarah Jones, *Blake*, Department of English, University of Rochester, Rochester NY 14627-0451. Back issues are available; address Sarah Jones for information on issues and prices, or consult the web site.

MANUSCRIPTS are welcome in either hard copy or electronic form. Send two copies, typed and documented according to forms suggested in the *MLA Style Manual*, and with pages numbered, to either of the editors. No articles will be returned unless accompanied by a stamped self-addressed envelope. For electronic submissions, you may send a disk, or send your article as an attachment to an email message; please number the pages of electronic submissions.

INTERNATIONAL STANDARD SERIAL NUMBER: 0160-628x.
Blake/An Illustrated Quarterly is indexed in the Modern Language Association's International Bibliography, the Modern Humanities Research Association's Annual Bibliography of English Language and Literature, Humanities International Complete, Arts and Humanities Citation Index, Current Contents, Scopus, and the Bibliography of the History of Art.

© 2009 Copyright Morris Eaves and Morton D. Paley

Cover: Postcard photograph, 8.8 x 13.7 cm., showing the south aspect of Blake's cottage in Felpham (see p. 131). Essick collection.

Martin K. Nurmi

1920-2008