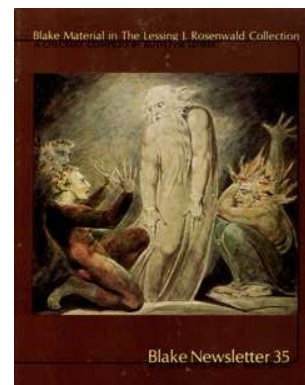


AN ILLUSTRATED QUARTERLY  
**BLAKE**

C O N T E N T S

Blake/An Illustrated Quarterly, Volume 9, Issue 3, Winter 1975-76, pp. 57-59



Blake Material in The Lessing J. Rosenwald Collection  
A CHECKLIST COMPILED BY RUTH FINE LEHRER



Blake Newsletter 35  
AN ILLUSTRATED QUARTERLY WINTER 1975-76

# A Checklist of Blake Material in The Lessing J. Rosenwald Collection, Alverthorpe Gallery, Jenkintown, Pennsylvania

COMPILED BY RUTH FINE LEHRER, CURATOR

## Contents

I. Blake's Works	
A. Manuscripts	60
B. Letters	60
C. Works Printed in Ordinary Type	60
D. Illuminated Books	60
E. Line Engravings	61
II. Book Illustrations	
A. Engraved by Blake from His Own Designs	62
B. Designed by Blake, Engraved by Others	63
C. Engraved by Blake after Designs by Others	64
III. Separate Plates	
A. Engraved by Blake from His Own Designs	70
B. Engraved by Blake after Designs by Others	71
IV. Drawings and Water Colors	
A. National Gallery of Art, Rosenwald Collection	72
B. The Library of Congress, Rosenwald Collection	75
C. Lessing J. Rosenwald Collection	76
V. Color Printed Drawings and Paintings	
A. Color Printed Drawings	78
B. Paintings	78
VI. Copper Plates	
A. Engraved by Blake from His Own Designs	79
B. Designed by Blake, Engraved by Others	79
VII. Drawings by Others for Engravings by Blake	
A. The Library of Congress, Rosenwald Collection	79
B. Lessing J. Rosenwald Collection	79
VIII. Miscellaneous Related Works	
A. National Gallery of Art, Rosenwald Collection	80
B. The Library of Congress, Rosenwald Collection	80
C. Lessing J. Rosenwald Collection	82
IX. Restrikes	
A. National Gallery of Art, Rosenwald Collection	82
B. Lessing J. Rosenwald Collection	82
Index	83

Copyright ©1976 Morris Eaves and Morton D. Paley

## Introduction

The checklist includes works by William Blake and works closely related to Blake's oeuvre collected by Lessing J. Rosenwald. Currently housed at Alverthorpe Gallery, Jenkintown, Pennsylvania, most of the items are part of the collections of the Library of Congress and the National Gallery of Art, Washington, D. C. A few items remain in the private collection of Mr. Rosenwald.

Without assistance from numerous persons, the problems of compiling the checklist would have been magnified. Sincere appreciation is extended to the following: Martin Butlin, Larry Day, Robert N. Essick, and Lois Fern, who repeatedly offered information and advice; at Alverthorpe Gallery: Elizabeth J. Glassman, Kathleen T. Hunt, Florence H. Larson, Mildred C. Mackie, Anthony Rosati, Florence R. Schmidt, and Starr Siegle; at the Library of Congress: Thomas D. Burney and William Matheson; at the National Gallery: Peter Davidock and H. Diane Russell; at the University of New Mexico: Morris Eaves, Corinne Henning, Virginia Masi, and David Schnur.

Most importantly, appreciation goes to Lessing J. Rosenwald, whose farsightedness and generosity as a collector have made the checklist both necessary and possible. R.L.

## Illustrations

cover: The Ghost of Samuel Appearing to Saul, water color, listed p. 73. The four-color reproduction was made possible through the generous assistance of Lessing J. Rosenwald.

page 60: The Soul Hovering over the Body, color-printed relief etching, listed p. 61

page 62: St. Augustine Converting King Ethelbert of Kent (?), drawing, listed p. 73

page 63, column 1: Figure on knees, drawing, listed p. 74

page 63, column 2: Male figure, seated, drawing, listed p. 72

page 68: Figure stretched along the ground, drawing, recto, listed p. 76

page 69: Figure stretched along the ground, drawing, verso, listed p. 76

page 70: Reverend Robert Hawker, D. D., engraving, listed p. 71

page 71: Edmund Pitts, Esq., stipple engraving, listed p. 71

page 72: The Resurrection, drawing, listed p. 72 (B 4204)

page 73: And Saul Said Unto David, "Go and the Lord be with you," drawing, listed p. 72

page 74: Seven figures seated, drawing, listed p. 72

page 75, column 1: Verso of *The Eagle* (for Hayley's *Ballade*); possibly the study for a frontispiece, drawing, listed p. 75

page 75, column 2: Variation of the above, listed p. 75

page 76, column 1: A woman with snaky locks, drawing, listed p. 76

page 76, column 2: Winged creature, drawing, listed p. 76

page 77, top: Several figures and horse in landscape, recto, drawing, listed p. 76

page 77, bottom: Variation of the above, verso, listed p. 76

page 78: Job and his Three Daughters, painting, listed p. 78

page 79: Figure in center of clouds, drawing, listed p. 74

pages 80-81: Lear and Cordelia, Butts Sr. or Jr. after Blake, engraving, five proofs, states 1-5, listed p. 80

page 82, column 1: The Death of Demosthenes (Kneeling figure leaning over a reclining figure), drawing, listed p. 82

page 82, column 2: Several studies for a monument, drawing, listed p. 82

page 84: Los in His Rage, drawing squared for etching, listed p. 73

## Key

- B&K *Illustrations of the Book of Job by William Blake.* Lawrence Binyon and Geoffrey Keynes. New York: Pierpont Morgan Library, 1935.
- B&N *A Blake Bibliography.* G. E. Bentley, Jr., and Martin K. Nurmi. Minneapolis: Univ. of Minnesota Press, 1964.
- BS *Blake Studies*, second ed. Geoffrey Keynes. Oxford: Clarendon Press, 1971.
- E&E *William Blake: Book Illustrator*, Volume 1. Roger R. Easson and Robert N. Essick. Normal, Ill.: American Blake Foundation, 1972.
- K *A Bibliography of William Blake.* Geoffrey Keynes. New York: Grolier Club, 1921.
- K *Engravings by William Blake: The Separate Plates.* Geoffrey Keynes. Dublin: Emery Walker, 1956.
- K† *Blake's Pencil Drawings*, second series. Geoffrey Keynes. London: Nonesuch Press, 1956.
- K&W *William Blake's Illuminated Books: A Census.* Geoffrey Keynes and Edwin Wolf II. New York: Grolier Club, 1953.
- L *The Letters of William Blake.* Ed. Geoffrey Keynes. Oxford: Clarendon Press, 1968.
- LC The Library of Congress, Washington, D.C.
- LC# The Library of Congress, Rosenwald Collection, catalogue number.
- LJR Lessing J. Rosenwald Collection (entered in LC column to save space).
- NGA National Gallery of Art, Washington, D.C.
- NGA# National Gallery of Art, Rosenwald Collection, accession number.
- NGA 1957 *The Art of William Blake.* Elizabeth Mongan. Washington, D.C.: National Gallery of Art, 1957.
- R *The Engravings of William Blake.* Archibald G. B. Russell. Boston and New York: Houghton Mifflin, 1912.
- r recto.
- v verso.
- 2x, 3x "two impressions," "three impressions": indicates that the print is held in two or three impressions without a difference in state unless a difference is noted. 2x may indicate two impressions belonging to LC under one catalogue number, or under two numbers (both numbers are then listed side by side), or one belonging to LC and one to NGA (numbers are then listed in both columns).

Works in Part I (Blake's Works) and Part II (Separate Plates) are listed by arabic numbers that precede the Keynes number: 1., 2., etc. If more than one item is held under one title, the numbering proceeds 2/1, 2/2, 2/3, etc.

Works in Part II (Book Illustrations) are listed as follows:  
bound volumes are listed by arabic numbers that precede the Keynes number: 1., 2., etc.  
a single print taken from a bound volume is listed by a number and a letter if it is the first item of a numbered entry: 2a., 3a., etc.  
all subsequent single prints in an entry are listed by letter only: a., b., etc.  
an LC catalogue number for the first in a group of these single prints from books covers all prints under that numbered entry

unless otherwise noted; an NGA accession number covers only the item next to which it appears.

Titles in parentheses are descriptive.

\* marks entries for which information was received from Martin Butlin.



The *Blake Newsletter*, An Illustrated Quarterly, is published four times a year under the sponsorship of the Department of English of the University of New Mexico.

Editors: Morris Eaves, University of New Mexico, and Morton D. Paley, Boston University.

Bibliographer: Thomas Minnick, Ohio State University.

Associate Editor for Great Britain: Frances A. Carey, Assistant Curator, Department of Prints & Drawings, British Museum.

Editorial Assistants: Virginia Masi and David Schnur, University of New Mexico.

Circulation Manager: Debra Sackett, University of New Mexico.

Manuscripts are welcome. Send two copies, typed and documented according to the forms suggested in the *MLA Style Sheet*, to either of the editors: Morris Eaves, Dept. of English, Univ. of New Mexico, Albuquerque, N.M. 87131; Morton Paley, Dept. of English, Boston Univ., Boston, Mass. 02215.

Subscriptions are \$5 for one year, one volume, four issues. Special rate for individuals, \$4 for one year, surface mail. For subscribers overseas who want to receive their issues by air mail, \$8. U.S. currency or international money order if possible. Make checks payable to the *Blake Newsletter*. Address all subscription orders and related communications to Debra Sackett, *Blake Newsletter*, Dept. of English, Univ. of New Mexico, Albuquerque, N.M. 87131.

Some back issues are available. Address Debra Sackett. Prices: whole numbers 1-8, bound together, whole numbers 9-13, bound together, \$5 each (special rate for individuals, \$4). Whole numbers 22, 23, 24, 25, 26, 27, 28, 32, 33, 34, \$2 each. Whole number 20 (*A Handlist of Works by William Blake in the Department of Prints & Drawings of the British Museum*, edited by G. E. Bentley, Jr.), and whole number 35 (the present issue), \$3. Whole numbers 14-19 are out of print.

The International Standard Serial Number of the *Blake Newsletter* is 0006-453X.

Design and layout for this issue: Corinne M. Henning, UCLA, Virginia Masi, and David Schnur, University of New Mexico.

# Blake Newsletter 35

VOLUME 9 NUMBER 3 WINTER 1975-76